

# The Chanticleer

Vol. 38 No. 2

Jacksonville State University, Jacksonville, Ala 36265

September 6, 1990



Thom Pannell mowing around future Delta Chi house, story on p. 2.

## Support plan developed for student soldiers

By **GEORGE DUNLAP**  
News Writer

JSU has not forgotten its students who may have to join our forces in Saudi Arabia.

The University has developed plans to support students who must leave their studies because of military duties during the Persian Gulf crisis. The support will help to ease the academic and financial burdens of a call up.

"The University will do everything possible to aid students called to active duty," said Lieutenant Colonel Bill Stone, Professor of Military Science. The financial support will be in the form of a full refund of their tuition. Dormitory and meal program fees will be prorated based on the amount used. If a student is receiving financial aid JSU will refund

the money to the organization or agency providing the support.

The students' academic records will show that they dropped passing regardless of their class standing at the time. If a student has completed the majority of the course requirements, the student may decline the tuition refund and take a grade of "Incomplete" for the course which would be completed after demobilization.

Students who are called to active duty or active duty students who receive orders to leave Fort Mc Clellan to support Persian Gulf operations must bring a copy of their orders to Lieutenant Colonel Stone at Rowe Hall for verification. If the student is unable to do this before they depart, they can do it upon their

See Support, p. 3

### Inside

■ Editorials/p. 10

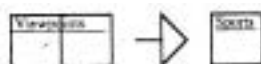
■ Features/p. 16

Comics/p. 23

■ Sports/p. 11

### Pull it out

Check out our new pull-out sports section. Take the middle four pages of The Chanticleer out to catch up on the Gamecocks. Inside those four pages you'll find game stories, features and the statistics that keep you up-to-date.



## JSU purchases land for 'master plan' Businesses affected by acquisition unhappy

By **KAREN PARR**  
News Writer

JSU has purchased land on the corner of W. Mountain St. and Forney Ave. in what University administrators are calling a "master plan" for expansion.

On Aug. 14 JSU purchased lots from Tom Cunningham and David Pearson. Two businesses, The Pub, a tavern, and The Sphinx, a restaurant, are located on the property.

David Turner, owner of The Pub, said the University is also trying to buy land from local property owners on the campus side of W. Mountain St.

Don Thatcher, assistant to the president, said that the acquisitions are part of a plan that the board of trustees is developing in conjunction with a consulting firm. He said that the University is trying to define entrances to the campus.

George Miller, vice president for business affairs, affirmed

**"It's not really the school's (JSU) fault. They just inquired about a property and bought it. It's just that they didn't make it clear that they wouldn't renew the lease."**

**David Turner**  
Owner of The Pub

Thacker's explanation and added, "the area is to become an attractive entrance to the campus."

The land purchase has caused conflict with the business owners of both The Sphinx and The Pub. Neither Turner or Willie Cobb and Mike Sahel, joint owners of The Sphinx,

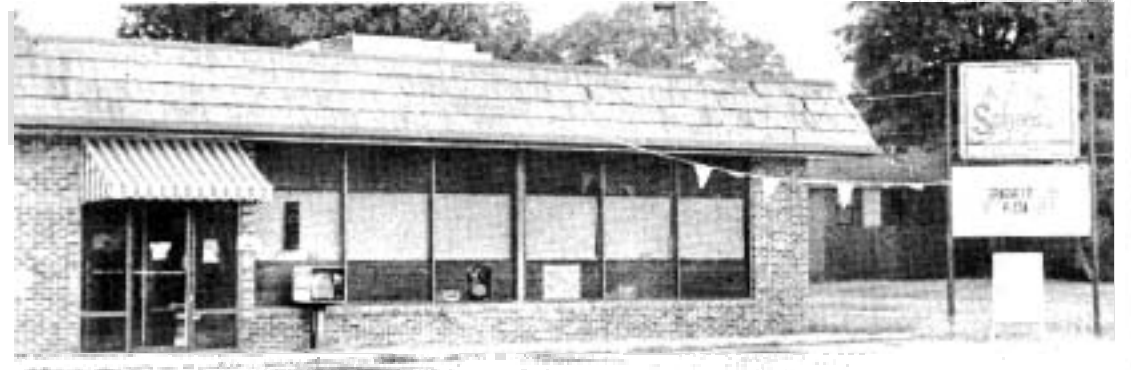
wanted to give up their business locations on campus. The University does not plan to renew their leases.

Cobb and Sahel received a letter dated Aug. 24 from JSU informing them that their lease would not be renewed. Cobb contends, before the University bought the land, her lease was good for several more years. She and Sahel have moved their business to the former Golden Boat restaurant. "I can't afford to keep fixing things over there, knowing I have to move out," said Cobb. "When we opened The Sphinx up, there were no ceilings."

Cobb said that Pearson and Cunningham rented her the building for \$450 per month during the time of repairs. "That's why he (Cunningham) wouldn't raise the rent. He just wanted to keep the building open so the property value would be up," said Cobb.

When the University took over

See Acquisition, p. 3



Sphinx Restaurant closed for business after University buys property.

## Killings terrorize Florida campus JSU police address crime prevention programs

By **SHANE McGRUFF**  
News Editor

Five ghastly slayings have paralyzed The University of Florida campus.

Last week police arrested several suspects to the killings that have made headlines across the country. But the arrests have done little if anything to squelch the nightmares of Florida students.

Judy Plunkett, editor-in-chief of Florida's campus newspaper, said that students don't know where to hide from the fear. "We're terrified, mad and angry because we don't feel safe at our own homes," she said.

For students at JSU and other campuses everywhere, the question is "could it happen here?"

David Nichols, Director of Public Safety at JSU, won't say it couldn't happen, but he will say what the University's doing to prevent it.

Nichols said that according to a study done last spring, 67% of crime on campus occurred in residence halls or University owned apartments. Based on those results, some changes were made on how patrols work the campus.

During the nighttime hours one armed officer walks the area around the dorms. Additionally, two student patrol officers without guns walk in

See Crime, p. 3

# NEWS

## Frat moves to mayor's house

By SHANE McGRUFF  
News Editor

The Delta Chi fraternity has purchased Mayor John Nisbet's house on 211 W. Mountain for an undisclosed amount.

Delta Chi Treasurer Doug Singleton said the relocation was an independent action of the fraternity and wasn't affected by the subsequent rezoning of the former house on the corner of W. Mountain and Pelham as commercial property. The Delta Chi's have been looking for a new location for about two years. They expect to be moved in the new house by the end of the month.

Singleton said that plans were underway to build a 1000 ft. expansion to be used as a party room. The existing home includes four bedrooms, a presidential suite and three formal rooms. Behind the house, plans are in the works to build a basketball court, volleyball court and horseshoe pits.

"We think we have the ultimate (house). We're closer to the Univer-

sity and we're out of the public spotlight," Singleton said.

The Delta Chi's will save money by moving to the new house. Singleton said that several brothers would be living at the new location and their rent will help defray payments and maintenance costs.

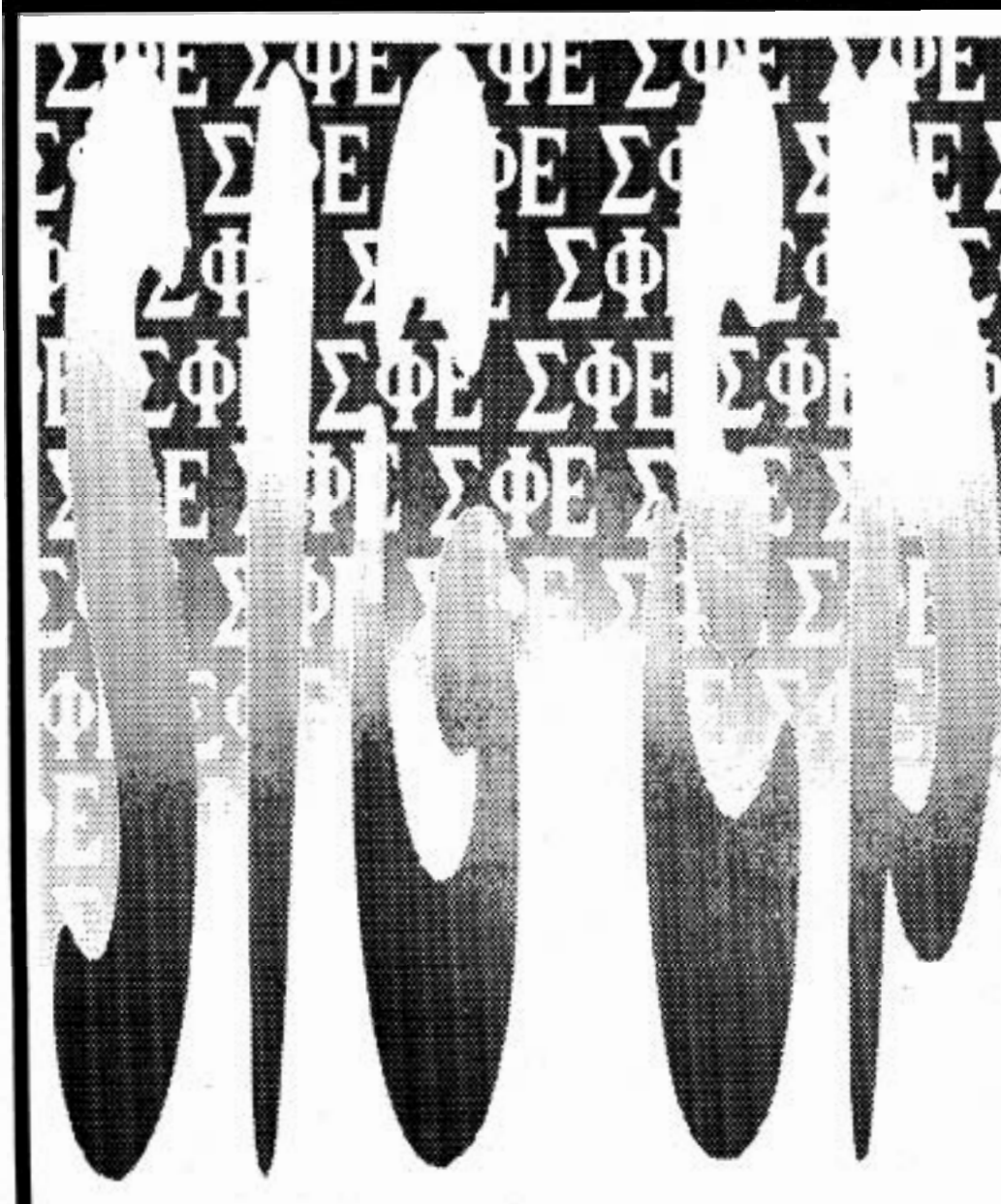
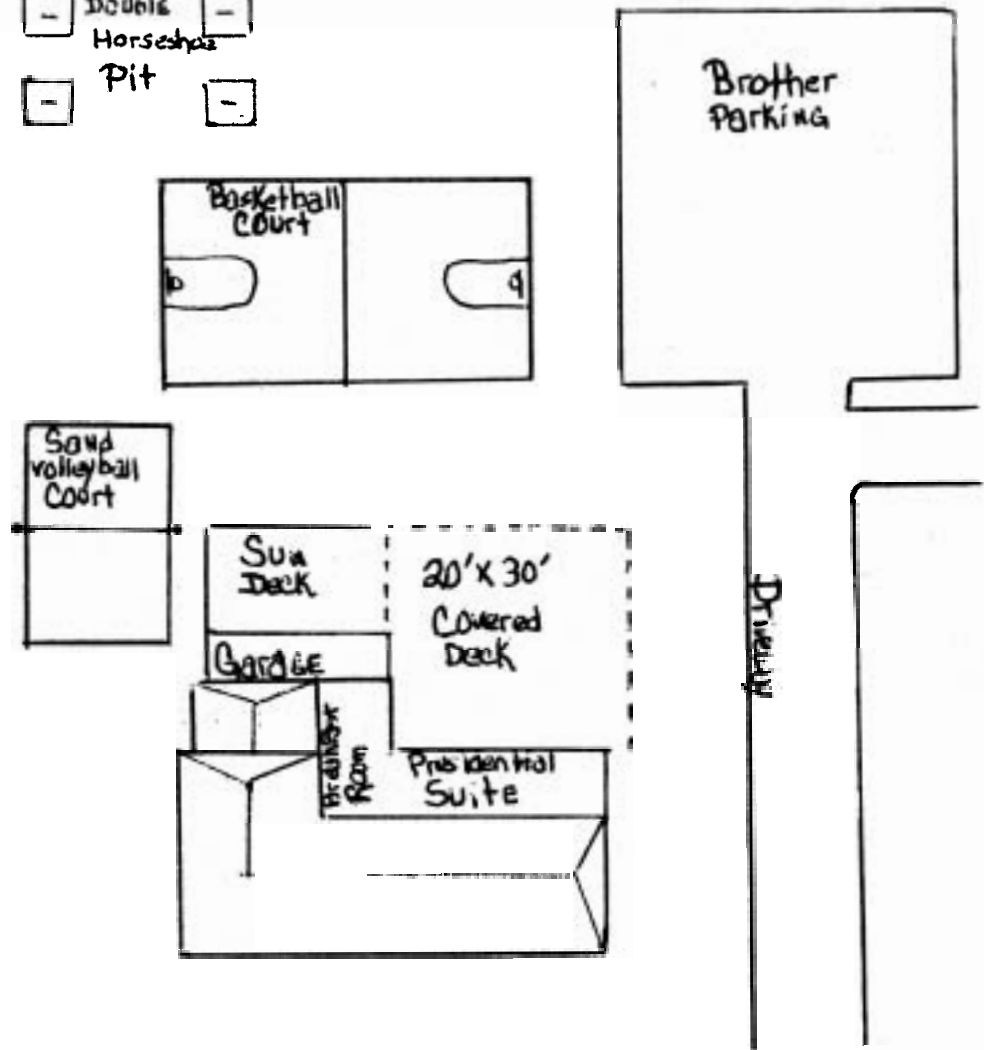
The fraternity has 40 brothers at present, up from a low of 17 in the fall of 1988. Singleton attributes the growth to internal changes in the fraternity and in particular an effort to increase its academic performance.

The Delta Chi's offer a scholarship to the brother and pledge with the highest GPA. Singleton said that the fraternity's cumulative GPA was 2.34 for the fall semester.

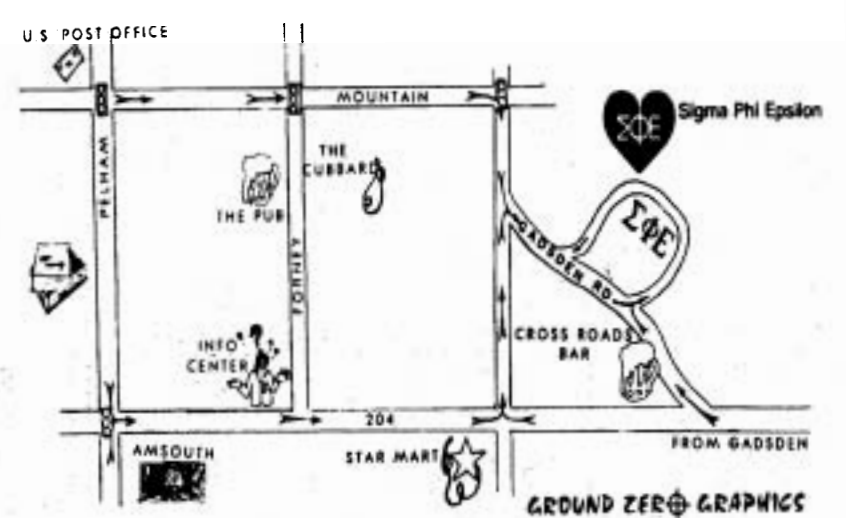
Singleton hopes the new house will help with growth. "It's easy to anticipate 60 to 65 members by the spring."

The Delta Chi fraternity was the first fraternity established at JSU in 1968. Lt. Col. Bill Stone of the Military Science Department is the fraternity's faculty advisor. He takes over for Lee Manners, retired art professor and one of the founding members of the JSU chapter.

- Double
- Horseshoes
- Pit



# RUSH



## ... enough said.

# Crime . . . . .

From p. 1

the vicinity of the residence halls. The women's dorms have a female guard with a two-way radio positioned to report any kind of problem.

For women walking on the campus at night, the campus police offer a female escort service. By calling 5050 students can get an officer to escort them from any location on campus to any other place on campus.

When a crime does occur on the JSU campus, the University Police have resources to investigate. Their personnel includes Sgt. Nelson Coleman who came from Washington D.C.; he was a detective with Metropolitan Police Department where he served 16 years in the area of sex crimes. Nichols and his staff have access to the state forensic science lab that can be utilized for campus investigations.

The University Police Department's annual report for last year indicates that 614 incidents of crime were reported and 124 arrests

**"Women shouldn't be scared of reporting rape; it's not what you see on TV..."**

**David Nichols**

were made. There were five incidents of sex crimes on the JSU campus last year but no arrests on rape charges.

Nichols is concerned that women don't report sex crimes. "Some of the same guys get away with rape over and over. Women shouldn't be scared of reporting rape; it's not what you see on TV. You can stop at any point in the process."

He said that women aren't normally asked questions about their sex life or forced to undergo intense personal scrutiny.

# Acquisition . . . . .

the lease the rent returned to the original contract price of \$600 per month.

Turner said he would not have bought The Pub if he had known about the University's plan. He began leasing the building on April 6, 1990. Three weeks later he heard

rumors that the University was buying the land. "If I hadn't found out from a source, I would have spent \$5000 on a back patio, which would be down the tubes," said Turner.

Turner said that he thought the former property owners knew of the University's plan when they leased

him the building. "I would bet my bar on it—which is not worth much," Turner said laughing.

"It's not really the school's (JSU) fault," added Turner, "They just inquired about a property and bought it. It's just that they didn't make it clear that they wouldn't renew the lease."

# Support . . . . .

return.


Although Stone said no students have been mobilized, it is estimated that as many as 400 students may be directly affected by this crisis.

The Military Science Department will aid the families of students called to active duty by serving as link between the families and the

active duty military facilities. This

will include assisting them in getting ID cards and enrolling them in the military health care system.


According to Stone returning students will be assisted in every way possible as they resume their studies.



**CATHOLIC STUDENT ORGANIZATION**

The Catholic Student Organization (C.S.O.) will meet on Tuesdays of this academic school year. Our first meeting will be on Tuesday, September 4th at 6:30 p.m. at our Parish Hall. This will be a social and informational gathering.

In September we will have a Bible Study group meeting on Tuesdays and in October a weekend retreat is planned in Tuscaloosa. For more information about the C.S.O. program, please call Father Kevin Cooke at (205) 435-3238. The C.S.O. meets at St. Charles Catholic Church.



# Foothills Furniture

**"THE JENNY LYNN BED"**  
One of the most famous styles featuring beautifully turned wood posts, rails and supports. Twin Size.

NOW . . . **\$99<sup>00</sup>**

\*See our complete selection of Quality Furniture . . . at remarkable savings.

TWIN SIZE BEDDING	5 PIECE DINETTE	ODD PIECES
<b>\$59</b> Each Piece	<b>\$169</b>	<b>1/2 Price</b>

**Large 3-Drawer Student Desk**  
**\$139<sup>95</sup> AND UP**

\*\*\*\*FINANCING AVAILABLE\*\*\*\*  
VISA • MASTERCARD • AMERICAN EXPRESS



HWY. 21 **435-8181** MON. - SAT. 10 - 6  
between Anniston / Jville SUN. 1 - 5

# This semester, take some electives in communications.

**Introducing AT&T Student Saver Plus.**

This year it'll be easier to get through college. Because AT&T has put together a program of products and services that can save you money. Whether you live on or off campus.





Gabrielle Knesler • Skidmore College • Class of 1991

**60 minutes of long distance. For free. Movies. Videos. And more. For less.**

Just by choosing any Student Saver Plus program, you'll get up to 60 minutes of free long distance calls. You'll also get a free coupon booklet good for savings all around town!



**You don't need to wait till spring to get a break.**

With the *AT&T Reach Out® America Plan*, you'll get savings 24 hours a day, 7 days a week, including 25% off our already low evening prices.



**Call from anywhere to anywhere.**

We'll give you a free *AT&T Calling Card*, even if you don't have a phone. So you'll be able to make a call from almost any phone and have it billed to you, wherever you live.



**Keep your roommates in line.**

We'll separate your long distance calls from your roommates' calls with *AT&T Call Manager*®. And we'll do it for free.



To enroll in the AT&T Student Saver Plus programs that are right for you, or to get the best value in long distance service, call us. They just might be the most profitable electives you'll ever take.

**1 800 654-0471 Ext. 1230**  
**AT&T. Helping make college life a little easier.**



**AT&T**  
The right choice.

\* This service may not be available in residence halls on your campus.  
\*\* Discount applies to out-of-state calls (area-codes 5-10 per. Sunday - Friday)  
© 1990 AT&T



## Announcements

• Seniors interested in interviewing on campus this fall may attend one of these Jobsearch Seminars in the Career Planning and Placement Office, 102 Montgomery Building:

1:45 p.m. - 3:15 p.m. Sept. 10

11 a.m. - 1 p.m. Sept. 11

3 p.m. - 5 p.m. Sept. 12

2:30 - 4:30 p.m. Sept. 14

Tactics for Teachers (for education majors):

2:30 - 4:30 p.m. Sept. 20

2:30 - 4:30 p.m. Sept. 26

• The third annual Parents Day will be Sept. 29. The day-long celebration will culminate in a performance by Barbara Mandrell at 7:30 p.m. in Mathews Coliseum include a 5-K run, historic homes tour, Freedom Appreciation Day activities, and concerts. The Gamecocks will play Gulf South Conference for Mississippi College at 2 p.m. in Paul Snow Stadium. For a complete Parents Day schedule, call the JSU Office of Student Activities at 782-5491.

• The campus radio station, 92J, is looking for students to fill spots as on-air announcers. Students need not be Communication majors, but must be responsible. For more information, call 782-5571.

• Applications for Fulbright Grants are being accepted by the U.S. Student Programs Division, Institute of International Education, 809 United Nations Plaza, New York, New York 10017-3580. Candidates must be U.S. Citizens who hold a bachelors degree but do not hold a Ph. D., as well as a working knowledge of German. Applications must be in IIE Headquarters by October 31.

• Special Services is preparing the Student Telephone Directory to be issued during October. The directory will contain a student's name, local and mailing address, telephone numbers, class standing, and major. Students' desiring to be excluded from the directory should call the Telephone Center (ext. 4000), no later than Sept. 14. The directory will contain limited advertisements and discount coupons. The advertisers will be given a directory.

• Employers from the southeastern region will be on the J.S.U. campus Tuesday, Sept. 18, for the annual Fall Career Fair. The Event will be held in the Montgomery Building auditorium from 10:00a.m. - 3:00p.m. and is open to all students and alumni of the university. JSU faculty and staff members are also invited to attend the Fair.

• National Association of Accountants Meeting will begin 6:30p.m., Sept. 18, on the eleventh floor of Houston Cole Library. Registration will be held from 5:00-6:30p.m. and dinner will begin at 6:30p.m. Dr. Trivoli's presentation on "Anticipating and Reacting to Blocked Funds Problems in Latin America" will follow. All faculty, staff, and students are cordially invited to attend any or all of the evening's activities. Dinner will

## Dates to Remember

Sept. 11 Last day to withdraw and receive 80% refund

■ Sept. 20 Last day to drop course without academic penalty.

Sept. 25 Last day to withdraw and receive 50% refund

■ Oct. 3 Last day to register for the English Competency Exam (Room 215 SC).

ΔZ ΔZ ΔZ ΔZ ΔZ ΔZ

ΔZ



ΔZ

ΔZ

ΔZ

ΔZ

ΔZ

ΔZ

**Δ Delta**

ΔZ

ΔZ

**Z Zeta**

ΔZ

ΔZ

**Welcome to JSU!**

ΔZ

ΔZ

ΔZ

ΔZ

*Congrats to all sororities on a great fall rush!*

*Good luck to the fraternities on rush!*

ΔZ

ΔZ

ΔZ

ΔZ

ΔZ

ΔZ

**GO GAMECOCKS!**  
**We hope you have a great season.**

ΔZ

ΔZ

**We ♥ our new pledges!**

ΔZ

ΔZ

ΔZ ΔZ ΔZ ΔZ ΔZ

ΔZ

# Rush Kappa Alpha

The philosophy of Kappa Alpha asserts that the pursuit of excellence in all things and the development of character and personal integrity are the great goals of life. Through fellowship and brotherly example, KA seeks to teach young men to be leaders, to be brave and self-reliant, and, like Robert E. Lee, to live as gentlemen of honor.

The KA Southern Gentlemen

# Dean of Criminal Justice profiles serial killer

By RUTH HUGHES  
Editor in Chief

Ted Bundy. Wayne Williams. The Boston Strangler. The Green River Killer. The Yipsilanti Killer. John Henry Lucas.

They are all famous, rather infamous. These men, and many more like them, spread terror to all reaches of the United States. These men were serial killers.

FBI studies indicate that at any one time there between 30 and 35 serial killers operating in the U.S. Federal, State and Local authorities in Gainesville, Fla., are searching for the latest to join the ranks of men like Bundy and Lucas.

Tom Barker, dean of the College of Criminal Justice, as well as an expert on serial murders, said the person who killed the five students in Gainesville definitely fits the mold of a serial murderer.

"This person is a psychopath," Barker said. "To this person, other people are not humans, they are objects. Most of them are extremely

outgoing and sincere on the exterior. But, below the exterior, you are just an object."

Barker said that psychopaths live in a fantasy world of their own. In their fantasies, they think of what it would be like to kill, to mutilate. Most have access to pornographic material.

"But, they are not psychopaths because of the pornography, they watch pornography because they are psychopaths," Barker is quick to add.

Over time, the person reaches the point where he is ready to live out the fantasy.

"Once he lives it out, he is sure to kill again. After they have killed the first time, they are off and running."

Barker noted that this particular killer is of an extremely dangerous nature because he is "getting his rush from killing a number of people at one time."

"There are different degrees of psychopaths," Barker said. "This dude is on the far end."

Barker uses the pronoun "he" because he feels a woman could not

accomplish what the assailant in Gainesville did.

"I feel like I have done enough study in this area to say that no woman will be a serial killer. Females may have assisted killers or been with them when a murder occurred, but they will not do it themselves."

Barker does not believe that serial killers are as intelligent as they are portrayed on television and in the movies. They are cunning, but the victims give them something that makes them dangerous.

"Serial killers rely on something that is tied to all of our social relationships — trust," said Barker. "They prey on that. Bundy would use casts on his arm and crutches to entice his victims (to help him). He preyed on (that trust)."

Serial killers are so "successful" because they are so good at manipulating their victims.

"Bundy manipulated right up to the end."

Similarities between the murders in Gainesville and the ones carried out

by Bundy have been so disturbing, some say the Gainesville killer may be a copycat killer.

Barker said that it could be possible. When Bundy was making his way into Florida in 1978, he intended to go to Gainesville, but his car ran out of water, and he was forced to stop in Tallahassee, where he committed his final acts of violence.

"Even though it's hard to imagine that Bundy would be anybody's hero, this might be some guy trying to finish what Bundy could not. (If I were on the case) that is one thing I would pursue. It's a fantasy that is something to consider," said Barker.

For many killers, college campuses serve as virtual playgrounds. Most of Bundy's victims were college age women. Edwin Camper and the Yipsilanti Killer, who has not been found, searched out their victims on college campuses.

"They know the type of victim they want, and they know where they are. (On college campuses) they can always find a victim. Whoever killed

those people in Florida, knew where to find his victims," said Barker.

Small campuses, like Jacksonville, are not as likely to attract this type of killer because it would be harder to conceal his identity. Larger campuses in urban areas are usually chosen.

Barker has no doubt that whoever killed the four young women and one young man in Gainesville is still there. Serial killers, such as Williams in Atlanta, usually live their whole lives in the area where the killing takes place, setting up false fronts and security. A few move into other areas when they think authorities have caught on to their "pattern."

"If he moves, he will kill again," Barker said. "The only way to stop a serial killer is to catch him. He is not going to stop because of guilt or remorse."

Barker recommends that young women read the book "Stranger Beside Me" by Ann Rule. Rule knew and worked with Bundy and relates a story that shows that people are not always what they seem.

EDWARDS'

LOW PRICES! TOP QUALITY!

We Give You Both!

OPEN 6 A.M.  
TILL MIDNIGHT  
7 DAYS A WEEK  
435-6630

DISCOUNT SUPERMARKET

500 PELHAM ROAD, SOUTH - JACKSONVILLE

SENIOR CITIZENS  
DISCOUNT EVERY  
TUESDAY

• None Sold To Dealers

FOOD  
STAMPS

• Quantity Rights Reserved

HOME-OWNED  
AND  
HOME OPERATED

Prices Effective Sept. 5 Thru Sept. 11, 1990

And Remember: "NO EXTRA CHARGES AT EDWARDS"

BEST BUY  
COOKED SLICED  
SANDWICH  
HAM  
10 OZ. PACKAGE

\$1.57

GOLDEN FLAKE  
POTATO  
CHIPS  
REG. & DIP CHIPS  
6-1/2 OZ. BAG

99¢

CLASSIC  
DELIGHT  
SANDWICHES  
EACH

87¢

# CII uses "precision method" to help students

By **ROBAN SMITH**  
News Writer

Imagine quadrupling your reading rate and competency during one semester.

Completing an algebra course with flying colors or becoming fluent in a foreign language. These are not dreams but reality at JSU's Center for Individualized Instruction. That is where Claudia McDade uses a precision teaching program that can benefit any student, including those with poor academic backgrounds and disabilities.

McDade says precision teaching is not a teaching method, but an attempt to measure performance of a student. The method requires students to be both fast and accurate.

The process may sound simple but it gets results. A student has a stack of cards with individual terms, formulas or equations written on each card. The student looks at the cards and says the answer out loud or write the answer down. She stresses the im-

portance of saying or writing the answer.

"You have to do something, not just think it," said McDade.

The student goes through the stack as fast as he/she can, two minutes or five minutes at a time, throughout the day. Goals are set to get a certain number of answers correct per minute. When the student reaches the desired performance level, McDade says, he's considered fluent in the subject area. Each time a student is tested, the performance is recorded on a standard acceleration chart.

"In the Center for Individualized Instruction, we assist around 4,000

students a year in various ways," said McDade. "We assist them in tutoring, we assist them in courses in the Department of Learning Skills. We assist them in courses that are from the regular academic curriculum. They are taught using precision method approaches."

The Center also uses a computer-based precision learning system which McDade says is a little less painful because students don't have to make up cards. The instructor makes them up and enters them on the computer.

McDade said studies on precision teaching over the years have found it

**"People have never emphasized performance of a student as the assessment of a school system or of a teacher."**

**Claudia McDade**

to be very effective.  
"Its like a bicycle," McDade said.  
"Students who have tried it in the past

come back and usually start out above minimum mastery levels of accuracy and fluency. But, in two or three tries, they are amazed at how quickly it comes back."

McDade said the precision method is available for students' use in about five courses this semester.

"We have it in more, it's just that we don't have sufficient equipment to accommodate the software," said McDade. "We're hopefully going to update the equipment this year and offer more courses."

The center is offering a course on the parts of speech, sentence struc-

**See Dean, p. 8**

## RESERVE OFFICERS' TRAINING CORPS

**PHILLIP WORSHAM**  
213 Orchard Street  
Justin, Oklahoma 10075

<b>CAREER OBJECTIVE</b>	An entry level position in an Electrical Engineering research or design firm.
<b>EDUCATION</b>	Bachelor of Science in Electrical Engineering, May 1987 Williamstown University, Justin, Oklahoma
<b>EXPERIENCE</b>	Summer Internship Summer 1986 Central Power and Light, Justin, Oklahoma Interned in the Power Transmission Department
<b>HONORS</b>	Dean's List
<b>ACTIVITIES</b>	Varsity Soccer Intramural Softball
<b>REFERENCES</b>	Available Upon Request

**LIEUTENANT JACK TODD MILLS**  
295 Maple Street  
Justin, Oklahoma 10075

<b>CAREER OBJECTIVE</b>	An entry level position in an Electrical Engineering research or design firm.
<b>EDUCATION</b>	Bachelor of Science in Electrical Engineering, May 1987 Williamstown University, Justin, Oklahoma U.S. Army Signal Corps Officer Basic Course, September 1987
<b>EXPERIENCE</b>	Training and Operations Officer, U.S. Army Reserve Officers' Training Corps, Williamstown University Planned, organized, and executed training for battalion of 110 cadets.  Communications Platoon Leader, Headquarters Troop, 1-17 Cavalry, 82nd Airborne Division, Fort Bragg, NC Responsible for the training, discipline and welfare of a forty-man platoon.
<b>HONORS</b>	Dean's List Distinguished Military Graduate Commandant's List, Officer Basic Course
<b>ACTIVITIES</b>	Army ROTC basic and advanced camps U.S. Army Airborne School Varsity Wrestling, Intramural Football
<b>REFERENCES</b>	<b>PROFESSOR OF MILITARY SCIENCE</b> Lieutenant Colonel Karl Dunn Williamstown University College of Liberal Arts CMA 1-702 Justin, Oklahoma

### WHICH ONE WOULD YOU RATHER WRITE?

When you spend four years becoming a leader, it shows. And that's what Army ROTC is all about.

Fact is, when you graduate from college with a Lieutenant's gold bar, you'll bring more than a degree and a better resume to a job interview. You'll bring confidence and the knowledge that you've done something that will make you a desirable candidate in the job market. A competitive edge few people your age have. Something you can be proud of.

So take a good look at Army ROTC. It just might help potential employers take a good look at you.



**ARMY ROTC**

**THE SMARTEST COLLEGE COURSE YOU CAN TAKE.**

**CALL CPT. CARPENTER OR MAJ. HOUSAND AT 782-5601**

### FOR SALE

**IBM CORRECTING SELECTRIC III TYPEWRITER**

ONLY USED TO TYPE TERM PAPERS FOR GRADUATE SCHOOL

**PAID \$900**

**SELL FOR \$350**

EXCELLENT CONDITION

**CALL 820-8889**

AFTER 5 P.M. WEEKDAYS

ANYTIME SAT. & SUN.

**IMMEDIATE JOBS FOR STUDENTS POSTERING ON CAMPUS.**

**COMPLETELY FLEXIBLE HOURS. GOOD PAY. BONUSES. NO CAR OR EXPERIENCE NECESSARY.**

**WRITE:**

**MR. JOHN HALETSKY  
THE CENTER FOR COLLEGE MARKETING, INC.  
992 HIGH RIDGE RD.,  
STAMFORD, CT 06905.**

**COMPLETE INFORMATION WILL BE SENT TO YOU. PLEASE ENCLOSE \$1 POSTAGE AND HANDLING.**



# Around Campus

**What do you think about JSU's open admission policy?**



*"There needs to be some sort of structure, so most of the students are on the same level."*

**John-Paul Robinson**  
Junior



*"It's pretty good, it gives everybody a chance"*

**Rance Pilkington**  
Freshman



*"Should stiffen the requirements to cut down on the size of the classes"*

**Phyllis Steele**  
Sophomore



*"Too easy. But they (University) should help foreign students to improve their English after they are accepted."*

**Mizue Ishibashi**  
Senior



## RUSH 90

**MONDAY, SEPT. 10 -**

**Kick-Off Party (casual) Leon Cole Auditorium 8:00 - 11:00 p.m.**

**TUESDAY, SEPT. 11 -**

**"Dress For Success" (formal) Alumni House 6:00 - 11:00 p.m.**

**WEDNESDAY, SEPT. 12 -**

**Buffalo Wing Night (casual) Alumni House 6:00 - 11:00 p.m.**

**THURSDAY, SEPT. 13 -**

**Centennial Night (casual) Alumni House (Billy Idol ticket drawing)**

**SATURDAY, SEPT. 15 -**

**Bid Acceptance Smoker (formal lunch) Gamecock Center 1 p.m.**

*"The incoming rushees will lead Delta Chi into its second century of brotherhood."*

- CHRIS THOMPSON, RUSH COMMITTEE

*"Not just a local club . . . a brotherhood which spans the globe running rampant in its 100th year."*

- RICK SCOTT, PRESIDENT

*The house . . . yard layout . . . "undeniably defines what a fraternity house should be like."*

- GREG DAMATO, U of FLORIDA TRANSFER

*"We've plotted a course to make us undisputedly #1 on campus. Through sorority relations and socials with other fraternities, we're going to be the best thing to happen to the Greek system since Greek letters . . . ΔΧ- The One To Watch!"*

- DOUG SINGLETON - TREASURER

## Dean . . . . . Peterson appointed director at JSU-Gadsden

From p. 6

ture, American Literature, English literature and some units in pre-algebra classes an basic algebra. McDade adds that a unit has just been made up in French. Student scan register for these classes each semester in the Department of Learning Skills.

"We often find that some of the older returning students really like the precision method because they can see their own progress," said McDade. The courses not only help students lacking in sufficient academic areas, but bright students as well.

The development of precision teaching goes back 25 years to Ogden Lindsley who was trained by B.F. Skinner. McDade describes herself as a "tough convert." Although she did not want to use the precision method, she kept seeing that it worked. Now McDade says she "runs around trying to convince others to do it."

"In our culture there is a resistance to approaches that work, said McDade. "People have never emphasized performance of a student as the assessment of a school system or of a teacher." "Hopefully all that is changing."

An entire public school system in Great Falls, Montana, is exclusively precision taught, according to McDade, and a high school on King-

sport, Tenn. has all of its science courses precision taught with computer based learning. "It's all over the place, we would just like to see its influence grow," she said.

Currently, McDade is working with 49 other leaders from the U.S. and Canada in instruction techniques. The group met in Nashville last May at a conference sponsored by the Center for Southern Studies.

"As a result of that conference, we came up with a strategic plan of things that each of us agreed to do over the next year to promote precision teaching," said McDade. In October the group will meet in Boston to see six months into the plan how much we've all done." McDade, newly appointed editor of the Journal of Precision Teaching, said she will publish the results in the fall issue.

"I want to see kids realize that they have to take the responsibility form the time they are small," said McDade. "We may not reach it in ten years or in my lifetime but we'll have to. We are in the information age."

Realistically, McDade believes precision teaching will be an "accepted alternative" in 10 years that will be discussed in colleges of education. McDade say precision teaching needs support.

"If colleagues are pushing we will; I get closer to the dream."

From JSU News Bureau

Robert G. Peterson, an attorney and former assistant dean at a New York medical school, has been appointed director of Jacksonville



Dr. Robert G. Peterson-

State University in Gadsden.

Peterson, who joined the University on Aug. 27, will be responsible for the administration of the JSU-Gadsden operation including course offerings, academic support activities, student services, and budgeting.

Peterson said his goals include expanding existing academic programs and developing new program offerings at Gadsden. "We will be particularly oriented to the adult student constituencies of Gadsden and nearby communities. This will include looking for ways

we can better serve the needs of business and other organizations in the area and addressing the needs that working employees may have for professional development," said Peterson.

During the past four years, Peterson has served as assistant dean for administrative affairs at City University of New York Medical School in New York City.

After serving three years with a Chicago law firm, Peterson began his career in higher education in 1968 as assistant dean of the

College of Arts and Sciences at Kent State University where he also taught courses in political science.

Peterson holds the Ph. D. in higher education administration, M.B.A., and J.D. degrees from the University of Michigan and an undergraduate degree in economics from Miami University, Oxford, Ohio.

JSU has offered undergraduate courses and programs on the Gadsden State Junior College campus since 1972.

## F.N. WOLF and CO., INC.

110 Wall Street, N.Y., N.Y.  
10005

We will be at the Career Fair  
on campus on Tuesday,  
Sept. 18, 1990

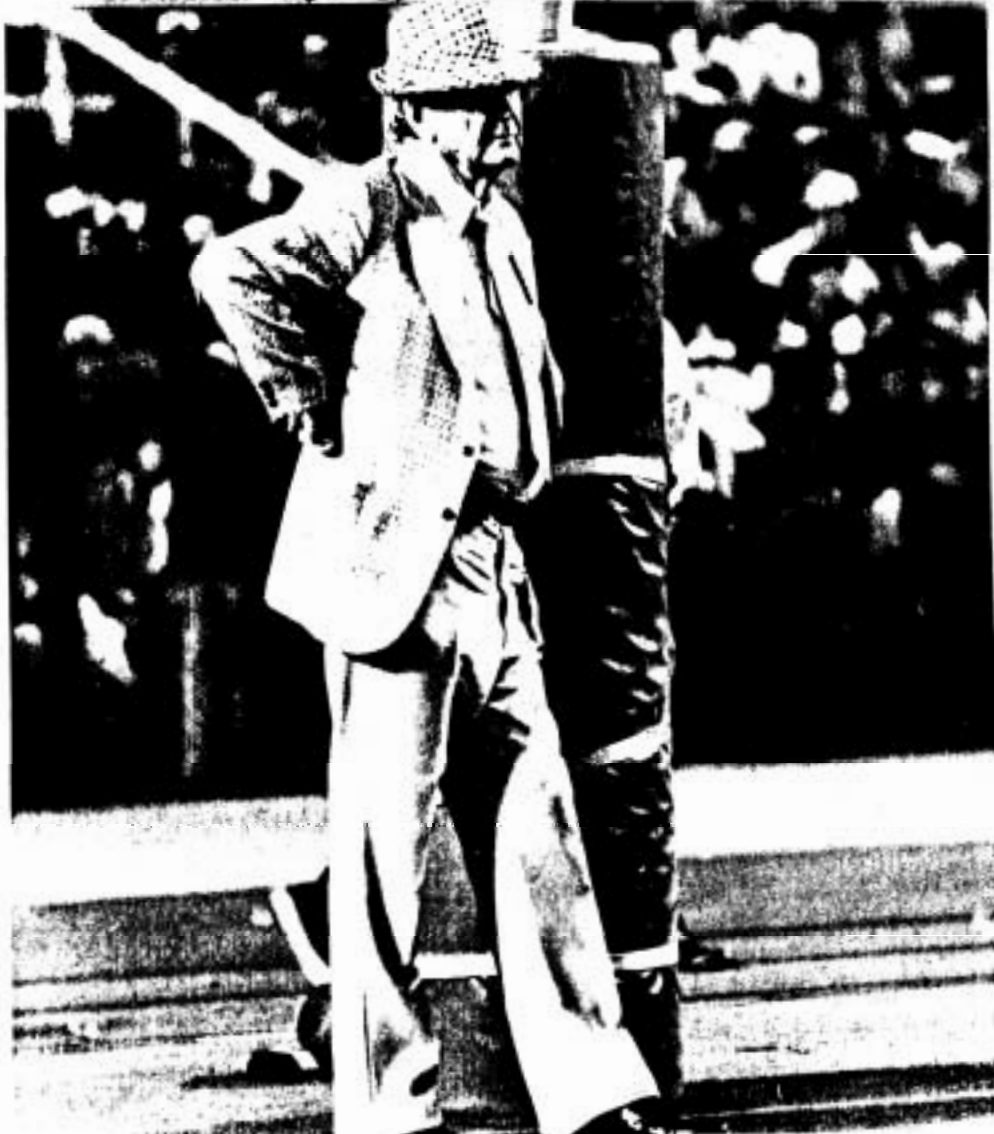
Local Office Now Hiring:  
18167 U.S. 19 North,  
Suite 200  
Clearwater, FL 34624

Branch Manager:  
James H. VanCleve

Phone:  
1-800-525-8005

If you want to explore  
an exciting career as a  
sales representative in  
the securities industry  
come talk to us at the  
Career Fair

RUSH SIGMA NU



I DID



## JSU student close to tragedy

By **RON WHITT**  
News Writer

The murders at the University of Florida have hit home for at least one JSU student.

Greg D'Mato, himself a transfer student from the University of Florida, has two sisters who live in the Gainesville area. One of his sisters, Dina, is a student at the University of Florida.

She has personally experienced the terror that has swept through the campus. In fact, she lives one-half mile from where one of the murders took place.

She says that the entire student body is so scared that many have dropped out and many others are avoiding night classes completely. She, along with many other students, has begun to sleep in groups with each person in the group taking turns watching the door. They do this because not only is it safer than being alone, but also because it gives them a kind of support system.

Dina has also witnessed how many of the students have reacted and the necessary precautions they have taken. She says that many of them are now purchasing guns and cans of Mace.

Dina also reports that the entire city has been turned upside down by the manhunt in progress. There are police cars everywhere, especially the neighborhood in which she lives. She says that there have been several nights when a strange person was sighted and police helicopters have searched around her apartment building.

There is also the added confusion of having torrents of media invade the city.

The University has also begun to take precautions for the safety of its students. They quickly installed seventy emergency phones around the campus. They have, of course, beefed up their security and use of the student escorting service has tripled. The university is also allowing students to skip night classes if they feel uncomfortable about going out after dark.

All of these safety measures should relieve some of the anxiety of the students, but for Dina D'Mato the threat is still very frustrating and frightening. She plans to stay on at the University of Florida, even though her parents and her brother, Greg, feel uncomfortable about her being there while the killer is still at large.

The Mimosa,  
JSU's award-winning  
yearbook,  
needs writers  
and photographers.

Come to the weekly staff meeting  
at 4 p.m. Wednesdays  
in 168 Self Hall  
or call 782-5240

**The 1990  
Mimosa®  
is in!**

**Students, faculty,  
staff and administrators  
may pick up their  
complimentary copies  
in 168 Self Hall.**

### "BUST A BRAVE" BASH TAILGATE PARTY

Reunion for Freshmen, Most Valuable Peers, and Faculty Mentors

**5:00 P.M. Saturday, September 15, 1990**

**Before the West Georgia game on the lawn behind Snow  
Stadium and Daugette Hall by the "tree"**

PEP RALLY WITH JSU CHEERLEADERS AT 5:45

SOUTHERNERS PERFORMANCE AT 6:00

KICKOFF FOR WEST GEORGIA GAME AT 7:00

Please call Revlon Spear at 782-5020 or come by the Office of Student  
Development on the fourth floor of Theron Montgomery Building to let us  
know if you will attend by 4:30 p.m. Wednesday, September 12, 1990

## \$5000 CASH BONUS FOR NURSES

The Army is now offering nurses with BSNs a \$5000 bonus. Nurses who qualify can join our health care team and receive \$5000 at their first duty assignment.

Army nurses also receive a competitive benefits package including:

- continuing education opportunities
- medical and dental care
- housing and uniform allowances
- specialty training
- travel, here and overseas.

But Army nursing is more. Army nurses can expect to practice in a variety of facilities -- field hospitals, clinics, or medical centers; and a variety of settings -- management, administrative, practitioner and clinical.

Army nurses can also expect to have autonomy in making patient care decisions, following the Army's Standards of Nursing Practice.

#### To qualify you must:

- have a BSN and be licensed to practice in the US (or be a student)
- not currently be holding a military nurse commission
- meet the Army's physical and moral standards

For more information, call your Army Nurse Representative.

Staff Sgt. Jeffrey Dehart  
120 Oxmoor Blvd., Suite C  
Homewood, AL 35209-6199

**ARMY NURSE CORPS.  
BE ALL YOU CAN BE.**



**H**old a piece of tape  
up to your eyes, dim the lights  
and try to fill out your taxes.

**Now you're seeing things from  
her point of view.**

Volunteer and help make  
someone's taxes less taxing.



For this woman it's poor eyesight, for someone else it might be arthritis or maybe they just can't cope. The fact is, last year 4 million Americans got the help they needed from IRS Volunteer Assistance Programs.

If you have the desire to help and a basic aptitude for math, you could become a part of the IRS Volunteer Assistance Programs.

The programs are year-round and open to any company, organization or individual that would like to give something back to their community. The training is free and the rewards are enriching. So volunteer and call 1 800 424-1040. Beginning October 1, 1990, please call 1 800 829-1040.

# Viewpoints

## Our turn . . .

### Traffic

Isn't it about time everybody stopped complaining about traffic on and around campus?

Enrollment at JSU has increased in leaps and bounds over the last five years. Now, there are close to 9,000 students and faculty members who need to get to classes at the same time. It was evident the first day of classes that the traffic congestion was nowhere close to improving.

But, for some reason, the majority of students still feel as if they just have to drive to classes and then feel compelled to complain about how bad the traffic is.

Since there evidently will never be a freshman car policy at JSU and since there are no plans for increased parking and since enrollment continues to climb, doesn't it make more sense to just walk? Of course it does.

But, if you still just have to subject yourself to the torture of driving to classes, please don't complain. After all, nobody is forcing you to do it.

### Show support

People across the nation are showing their supports of U.S. troops stationed in Saudi Arabia.

Motorists are displaying ribbons and flags on their antennae. Ribbons and flags can also be seen adorning houses, businesses and city streets.

Let's join the rest of the nation. Tie ribbons to your car, fly a flag, or even both. Maybe the University could spring for some yellow ribbons for the trees on the quad.

And, while we are remembering the men and women serving our country, let's not forget the students at the University of Florida. Include a black ribbon of mourning with your yellow and red, white and blue ribbons in remembrance of the five students brutally murdered in Gainesville last week.

### Thank you

We would like to extend a warm thank you to Bill Yates in the Financial Aid Office for doing his best to take care of all of our problems. Thank you Mr. Yates!

## The Chanticleer

"A nation that is afraid to let its people judge truth and falsehood in an open market is a nation that is afraid of its people." —

John F. Kennedy

Ruth Hughes

Editor in Chief

Rodney Parks

Sports Editor

Shane McGriff

News Editor

Jason Thompson

Business Manager

Christi McCarty

Photography Editor

Tonya Morrison

Features Editor

Patsy Long

Secretary

TJ Hemlinger

Faculty Adviser

The Chanticleer, the student newspaper of Jacksonville State University, is produced entirely by students. The editor has the final decision on editorial content. Funding is provided through university appropriations and advertising revenue. Offices are in 180 Self Hall.

Letters to the editor must be typed, double spaced, signed with the writer's affiliation with the University and no longer than 300 words in length.

Guest Commentaries are welcome, contact the editor for details.

Ideas on the editorial page are the opinions of the editorial staff unless otherwise noted.

The editor reserves the right to edit for content or space.

Send all submissions to Ruth Hughes, The Chanticleer, Box 3060, JSU, Jacksonville, AL 36265. Deadline for all submissions is 2 p.m. Friday.

## Down with open admission

By SHANE MCGRIFF  
News Editor

It's time for JSU to adopt admission standards.

Of the major public schools in Alabama, only JSU and the University of North Alabama have open admission policies. Its time to stop trading quality for quantity; there is no more room for students with zero incentive, zero ambition and zero credentials.

Several schools and departments on the JSU campus have already enforced standards out of necessity. The communication department has enacted tough new standards to offset the alarming number of seniors stuck in the program because of poor GPA's and a shocking ignorance of graduation requirements. The School

of Business, in its quest for certification, has some of the toughest requirements in the state.

Professors in classrooms across campus have to contend with students who have ACT scores ranging from seven to 30. There is no way to cater to those extremes. Classes become either impossible for one or unchallenging for another.

JSU spends thousands of dollars on remedial courses and repeat classes for students who will never graduate and will never repay their debt to the taxpayers of Alabama.

Students in high schools that feed JSU have nothing to achieve; no reason to sign up for college preparatory classes. It's a, "I ain't worried, I can always go to Jax State," attitude that is the biggest threat to this university.

The state of Tennessee toughened its enrollment standards. According

to The Birmingham Post-Herald, a recent study shows that Tennessee high school enrollment in sciences, algebra, advanced math, world history and foreign languages jumped as high as 143 percent.

In today's job market a post-secondary degree is becoming obligatory. Who wants to be shackled with a degree from a university devoid of respect. What sort of employer in the new global economy would want to hire a graduate from an open-admission school. Friendly's nice. But a career, a fresh perspective, and a lifelong springboard of learning is better.

The students of Jacksonville State University, the students who participate and graduate, deserve better. They deserve a degree that means something. A degree to be proud of.

## Your turn . . .

### Student raps "unfriendly" charge

Dear Editor,

I am writing in response to the girl who wanted to know where the friendliest campus in the south was. It is located at Jacksonville State University.

I am really sorry she had to wait for two hours for help to arrive. I just wonder if she did not have something to do with her extended wait.

I feel a few questions must be addressed before JSU is ruled out as being the friendliest. First of all, did she attempt to wave any of the University vehicles down, or did she just stand beside her car with the hood raised? I can not imagine a University vehicle driving by a

person who was waving them down. However, if she had called maintenance, they would have told her to stand by her car with the hood raised. The University workers probably assumed maintenance was on the way.

Which brings to mind my second question. Why didn't she call maintenance? If she was that close to Bibb Graves all she would have to do would be to tell someone who worked there her problem. They would have told her to call maintenance, given her the phone number and even let her use the phone. I have had to call maintenance two times because of a dead battery. Both times they were

both helpful and friendly. By the way, I am not a blond, or shapely and I don't own a mini-skirt.

The third question is has she ever read Matthew 7:7 in the Bible? It states "Ask and yer shall receive." I am sure if she had asked the two gentlemen wearing religious t-shirts for help they would have gladly lended a hand.

I realize she is a senior. I still feel she should take one more class. Initiative 101. If she doesn't, she is going to have a rude awakening once she leaves the FRIENDLIEST CAMPUS IN THE SOUTH.

Tandi Glenn  
Junior

## Wanted . . .

The Chanticleer is in desperate need of a few good columnists.

If you are a faculty member who likes to put pen to paper and would like to have a bi-weekly or once a month column on the editorial page, we would like to hear from you.

If you are a student, and you also like writing, we need student columnists as well.

The columns can be religious, political or just opinions.

If you are interested, call Ruth Hughes at 782-5701 or come by the Chanticleer office in Self Hall for details. Columnists must be affiliated with the University.

There once was a professor historical  
Whose questions were all rhetorical;  
He'd clown like an ape,  
With his jaw hung agape;  
His manners were quite arboreal!



# Sports

## Nine teams to battle for Gulf South Conference title

**By Rodney Parks**  
Sports Editor

Last season JSU claimed it's second straight Gulf South Conference title as the Gamecocks won the GSC by two games over Mississippi College and three games over Valdosta State.

This season as many as five teams could challenge JSU for it's title.

### JSU

Coach Bill Burgess will return 40 letterman to his team this season but only five starters on offense and four starters on defense.

Burgess has the talent to field a very good starting line-up but depth could be a problem if injuries hit the Gamecocks.

JSU will be led this season by quarterback David Gullidge who rushed 666 yards and 16 TD's, while passing for 878 and four TD's.

JSU has six road games this season and that could play a factor in the Gamecocks hopes of a third straight GSC title.

If JSU can claim road victories at Delta State and Valdosta State and win all of the home games, the Gamecocks should claim the GSC title.

### Mississippi College

Head Coach John Williams will begin his 19th year at Mississippi College with his most talented team ever. Thirty-eight letterman will return including nine starters on offense and seven on defense from last years national championship team.

Last season, Williams led his

Choctaws to an 11-3 overall record and a 6-2 GSC record.

Mississippi College's top returning players this season will be running back Fred McAfee, who rushed for 1189 yards and 10 TD's last season and receiver Nathaniel Bolton who had 62 receptions last season for 1012 yards.

Mississippi College will have an important opening game at North Alabama. Last season the Choctaws defeated North Alabama 34-0 in Clinton, Miss., but the Lions will be a much stronger test in Florence.

Other important games on the Choctaws schedule will be at JSU and Valdosta State.

If Mississippi College can win on the road in the GSC they will be at the top of the conference again.

### Delta State

Don Skelton returns for his third season as head coach of the Statesman. After a 4-6 record at Delta during 1988 Shelton led the Statesman to a 6-3-1 record last year including a 4-0-1 record during the final five games last year.

Hopes are high at Delta State this season because eight starters return on offense and seven on defense including fullback Revis Davis who rushed 746 yards in '89.

Quarterback Kenny Taylor will also return to the Statesman line-up. Last season, Taylor passed for 1320 yards and nine TD's.

Delta will have a tough road schedule this season with games at Southern Mississippi, Troy State and Mississippi College.

Delta will be a contender for the GSC title if it claims home victories over North Alabama, JSU and Valdosta State.



### Valdosta State

Last season, Valdosta State finished the year with a 5-5 overall record and 5-3 in the GSC, but the Blazers played much better than their record showed.

This season, the Blazers return 35 letterman including seven starters on offense and six on defense.

Key returning players this season will be quarterback Tye Cottle, who passed for 1677 yards and 14 TD's last season and running back Ramon Allen who finished last season with 846 yards.

If the Blazers can win important home games over JSU, Mississippi College and North Alabama they could find themselves at top of the GSC.

### North Alabama

Last year, North Alabama finished the year 6-5 overall and 4-4 in GSC play. The Lions had one of the best defenses in the GSC but they had trouble winning the close games as four of their five losses were by seven points or less.

This season, eight starters return off the offense but only three

starters return from the defense. Coach Bobby Wallace will have to rebuild his defense from the 36 letterman that are returning to the team.

The Lions will be led by quarterback Craig Bryant who hit on 51.9% of his passes for 1073 yards and seven TD's last season.

The Lions should finish in the middle of the conference standings this season but if they claim road victories at JSU and Valdosta State, Wallace's team could finish near the top of the standings.

### Troy State

This could be Troy State last season in the GSC, and after back to back 4-6 season's Coach Robert Maddox is hoping he will see some improvement in his team's performance.

Last season was very disappointing for the Trojans as they lost to Mississippi College 45-7 and JSU 38-3. The lowest point of the season came when the Trojans lost to West Georgia 28-14.

This season Troy State returns 36 letterman including eight starters on both offense and defense.

If the Trojans are to move back into the top of the GSC standings they will have to claim road victories over Mississippi College, JSU and North Alabama.

### West Georgia

West Georgia will be under the direction this season of first year Coach Ron Jurney. Last season the Braves finished the year 4-7 overall and 3-5 in the GSC.

Six starters will return on both offense and defense for Jurney this season. The Braves will be led by running back Shane Reinhardt who

rushed for 659 yards and nine TD's in '89.

With the coaching change look for the Braves to finish near the bottom of the conference again this year.

### Livingston

Last season Livingston saw some improvements in it's record as the Tigers finished the year 3-7-1 overall but only 1-6-1 in the GSC.

This season Coach Sam McCorkle hopes to see more improvement from his team as 39 letterman return including nine starters on offense and seven on defense.

The Tigers will be led by quarterback Jon Gant who passed for 1512 yards and seven TD's.

With only three GSC games at home the Tigers will have a hard time improving their record and should finish near the bottom of the conference this season.

### UT-Martin

Times are not good for UT-Martin. Last season, the Pacers managed only two wins during the season including a 1-7 GSC record.

Last year UT-Martin's run & shoot offense was held to one TD or less in six games.

This season only 21 letterman return, including just four offensive starters and three defensive, to Coach Don McLeary's team.

The Pacers will be led by quarterback Tom Ruban who completed 52% of his passes last season for 780 yards and five TD's.

With eight GSC games on their schedule, plus two road games with division I-AA teams, the Pacers should see little improvement in their record this season and finish at the bottom of the GSC.

0-0-0



JSU leads  
season series  
13-1-2

**JSU at Alabama A&M**  
**Sept. 8, 7:00 p.m.**  
**Milton Frank Stadium**  
**Huntsville, Al.**

Last meeting  
JSU 33  
A&M 9

0-1-0



### GSC Preseason Coaches Poll

Rank	Team	Pts.
1.	Miss. Coll. (5)	60
2.	JSU (2)	56
3.	Delta State (1)	49
4.	UNA	42
5.	Valdosta State (1)	39
6.	Troy State	31
7.	Tenn.-Martin	20
8.	Livingston	14
9.	W. Georgia	13

### Preseason GSC SID's Poll

Rank	Team	Points
1	Miss. Coll. (6)	61
2.	JSU (1)	53
3.	Delta St. (1)	49
4.	UNA	44
5.	Valdosta St. (1)	37
6.	Troy State	35
7.	Tenn.-Martin	18
8.	Livingston	15
9.	West Georgia	12

### Preseason Football Digest Poll

Rank	Team
1.	Indiana University-Pennsylvania
2.	Jacksonville State University
3.	Mississippi College
4.	Grand Valley State (MI)
5.	Texas A&I
6.	Angelo State, Texas
7.	St. Cloud State (MN)
8.	Hampton Institute (VA)
9.	West Chester (PA)
10.	Portland State (OR)



# JSU football team prepares



Photo by Ed Hill

*JSU ready to  
use wishbone  
again in '90*



Photo by Ed Hill

*Ralph Johnson  
prepares for  
senior year  
as a Gamecock*

# to defend Conference title

*Burgess eyes*

*Gamecock*

*defense*



Photo by Ed Hill



Photo by Ed Hill

*Derrick Griffie*

*carries the ball*

*followed by*

*Reginald James*

# JSU 1990 Football Schedule

September		
		Time
8	at Ala. A & M	7:00
15	West Georgia*	7:00
22	at Valdosta State*	12:00
29	Miss. College*	2:00
October		
5	at Delta State*	2:00
13	UNA (HC)*	2:00
20	at UT-Martin*	1:00
27	at Wofford	6:00
November		
3	Troy State*	7:00
10	at Livingston	1:00

\* Gulf South  
Conference Game

All game times  
are Central Times

# Saturday's GSC Football Scores

Georgia Southern	17
Valdosta State	10
Southern Miss.	12
Delta State	0
North Alabama	25
Alabama A&M	0
Central Florida	16
Troy State	10
UT-Martin	73
Lane College	0
East Texas St.	45
Livingston	6
West Georgia	49
Miles College	0

# JSU 1990 Volleyball Schedule

Date	Opponent
Sept. 18	Livingston
21-22	at MUW
25	UAH
26	at Huntington
28-29	at Rollins Inv.
Oct. 2	at Troy State
5-6	at UTM Invit.
9	West Georgia
12-13	at UNA Inv.
16	UNA
18	at Samford
23	at Livingston
24	at Miss. Coll.
26-27	Huntingdon
29	at pre-GSC Tourn.
30	at UAH
Nov. 30	at UNA
2-3	at W. Ga. Inv.
6	Troy State
8	at W. Georgia
16-17	at GSC Tourn.

### This Week's GSC Football Schedule

W. Ga. vs. Troy St. at Phenix City, 1 p.m.	UT-Martin at Austin Peay, 7 p.m.
Miss. Coll. at UNA, 7 p.m.	JSU at Ala. A&M, 7 p.m.
Delta State at Henderson St., 7 p.m.	Gardner-Webb at Livingston, 1 p.m.

# COSMOPOLITAN SPA

## 2 For 1

# SPECIAL

( 2 People Join For The Price Of One)

- Complete Free Weight Gym
- 26 Nautilus Stations
- 6 Dynacam Machines
- 12 Station Universal Exerciser
- Bally Lifecycles

- Vertical Climbers
- Tunturi Bikes And Rower
- Aerobics/Aquatics
- Heated Indoor Swimming Pool
- Separate In-Ground Whirlpools
- Dressing Rooms And Shower Facilities

- Personal Supervision
- Supervised Nursery
- Circuit Training
- Back Strengthening
- Fitness Evaluation

- Polar Plunge
- Dry Sauna
- Steamroom
- Abdominal Program
- Special Aerobics Floor

*Our Staff Includes Mr. Southeastern America  
And The #1 Powerlifter In Alabama*

**Clip Coupon  
and  
Come In Today!  
435-1144**

Present This Coupon For  
**ONE FREE WORKOUT  
AND TANNING SESSION  
OR ONE FREE MONTH OF AEROBICS**

Cosmopolitan Spa  
On The Square

Offer Expires  
Sept. 30, 1990



# Unread report raises doubts

By **MIKE LIVINGS**  
Columnist

Atlanta area students should be concerned about the process used to select the new police chief Edwin Bell.

While one would hope that Bell would make a fine police chief for Atlanta, one must look at the serious doubts raised in an 800 page background check by the Georgia Bureau of Investigation.

Yes that is correct, an 800 page report, which is a tad to large for a police officer. One would think that the city fathers would have taken at least a peak at this report.

The major charges in the report point to several times where the former chief found Bell in places were a police officer should not be found unless he is on the scene to make an arrest.

One part of the report covers an FBI sting operation where Bell wondered into and took no action against illegal drug activities at a drug party thrown by the FBI to catch drug dealers. The FBI reported that despite the dealers' knowledge of Bell at the party they used drugs where he could see them.

Also in this reports are doubts raised by former police chief Morris Redding about Bell's ethical standards and judgement.

There is a chance that Georgia's Board of Ethics may review the GBI report. This could result in Bell losing his appointment.

All of this should have raised some doubts, but Mayor Maynard Jackson pushed hard in his meeting with the city council to get his man the job. Bell must have worked hard to impress Jackson these last few months in order to get the job. After winning Jackson over, the 800 page report became a moot point with the city council who more or less became yes men for the mayor.

Indeed Chief Bell will likely make a fine chief for a city that has made national attention for its high rate of crime in the inner city.

However, people must question the way this individual was hired for Atlanta. The city council should have looked at the report despite the mayor's vote of confidence for Bell.

It be interesting to see how chief Bell will fit into this job. Will the concerns raised in the GBI report come back to haunt the chief and the city of Atlanta.

THE U.S. DEMANDS THAT IRAQ LEAVE KUWAIT, AND END ITS ATTACK; BUT IT'S HARD TO UNITE ALL OF OUR MIGHT WITH AN OIL COMPANY KNIFE IN OUR BACK!



TIM ↓

# Supportive instructors, fact or fiction?

By **RUTH HUGHES**  
Editor in Chief

The first week of this semester has been quite an eye opener for me.

In the past, I spent the days before classes began wondering what kind of instructors I was going to have. Were they going to be hard or easy, mean or nice. Was this going to be the semester where I would finally be challenged academically?

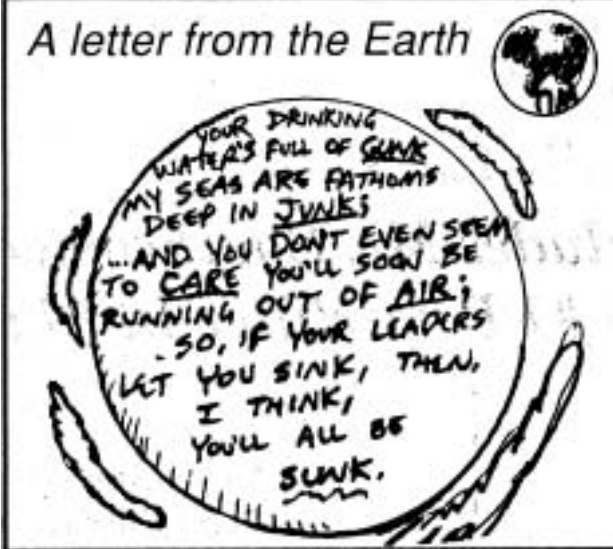
And, after one week of classes, I would always come to the same conclusion. The hard-earned money I spend (and it's my money) on the education I am supposed to be getting is not going very far.

Don't get me wrong. This is a fine University. We have a wonderful athletic program. It's a pretty campus. Most of the people here are really friendly.

However, in each of the five semesters I have been here, I have had some pretty bad teachers.

I had a teacher in a Tuesday-Thursday class who spent about 20 minutes talking about the subject and spent the rest of the time talking about his friends or putting down students.

Another teacher, on the day of finals, told the class that if you can't pass his class, you might as well drop out of college. I have



a 3.0 GPA and I failed his class. Does this mean I should turn in my student I.D.? I think not.

I've had several teachers who lectured (or read) straight from the book. I've had teachers who could barely speak English.

I had begun to think that there would not be an academically challenging semester in my college career. I am happy to say that I was wrong.

Each teacher I have this semester makes me feel as though the \$660 I shelled out for this semester is worth it. Each one actually lectures and does not read from the book. Each one seems supportive and understanding. And, not one has made an offhand comment about the intelligence of JSU students.

Before this week, I thought a supportive instructor was a rarity at JSU. But, because of the instructors I have now, I realize there could actually be more.

Thank you Mrs. P. Wingo, Senora Suco, Dr. Robinson, Dr. E. Williams, Mr. Hemlinger and Mr. Bell for opening my eyes. I look forward to learning a lot from each of you.

There have been a few teachers who have stuck out in my mind. Dr. Marker, Dr. Carmode, Mr. Chandler, Dr. Eoff, Dr. Aveni, Mr. Culver and Dr. Caldwell to name a few. Thanks to you for not selling your students short.

I'm sure there are many more good instructors out there that I have not had. And I look forward to being in their classes. However, I am tired of paying for classes with lazy and offensive teachers. I hope I don't feel as though I've wasted my money in the future.

# Lifestyles



Barbara Mandrell

## Mandrell scheduled for Parents' Day

By **TONYA MORRISON**  
Features Editor

Standing a feisty five-foot-two, country star Barbara Mandrell is living testimony of what talent and ambition can do. From her very first performance at the tender age of five, Ms. Mandrell knew that fortune and fame was her destiny.

Her road to stardom was not an easy one, though, as most aren't. Ms. Mandrell has been through hard times, and, yet, has come out a winner every single time, and proved it with the many awards (over 60 at last count) she has received throughout her 29 years in show business. She is a professional in every sense of the word and loved not only by her fans, but by her peers in the music industry.

With hits such as "Sleeping Single in a Double Bed" and "Midnight Oil", Mandrell has acquired a formula that has allowed her to enjoy major stardom in music and television. She made her television debut in Bakersfield, California at the age of 10. She, along with sisters Irlene and

Louise, later starred in a variety show, "Barbara Mandrell and the Mandrell Sisters". Despite good reviews, however, Ms. Mandrell had to quit the show in 1982 due to the toll that the long hours of singing and talking (sometimes 16 hours a day) was taking on her voice. Later that year, however, she began touring again and "Barbara Mandrell Live" and "The Best of Barbara Mandrell" both went gold.

After her "The Lady Is A Champ" stage show won raves in 1983, Barbara Mandrell decided to make the move back to television and starred in CBS's "Burning Rage". Then, just months before an almost-fatal car accident, Ms. Mandrell starred in "Barbara Mandrell--Something Special", a feature filmed in different locations throughout May, June and July of 1984.

In the accident, both cars were destroyed, and Ms. Mandrell received a severe concussion, a broken right leg, broken right ankle, damaged right knee and various cuts and bruises. Her daughter Jamie and son Matt both sustained minor injuries and seat belt bruises. The miracle in this lies

in the fact that only moments prior to the crash, Ms. Mandrell, normally not a seat belt user, demanded they all buckle up.

The accident has changed a lot in Ms. Mandrell's life, namely her stand on auto safety. Since the accident, she has become somewhat of a spokesperson on the subject and can be seen nationally in a Public Service Announcement available on video, audio, and poster. In the spot, she urges America to "Please, buckle up".

Barbara Mandrell has come a long way since that first appearance at age five. She is grown-up now, has a loving husband, Ken Dudney, three beautiful children and a world that embraces her with all of the affection and admiration she deserves. She is a star in every sense and a symbol to us all that if you want something bad enough, nothing should stand in your way.

Your chance to see Mrs. Mandrell will be on Parents' Day, September 29th. For more information, contact the Student Government Association at 782-5491.

## Goodbye to a legend, boo to Sinead

By **CRAIG MORRISON**  
Columnist

Rockline joins the rest of the music industry in mourning the death of legendary blues guitarist Stevie Ray Vaughan. A helicopter crash in Alpine Valley, Wisconsin August 27th claimed the life of Vaughan, fellow guitar god Eric Clapton's agent Bobby Brooks, and two other members of Clapton's road crew. The chopper was carrying the group from a concert the previous night featuring Vaughan, Clapton, and Robert Cray when it crashed into a ski slope in heavy fog.

Ironically, Stevie Ray Vaughan was not scheduled to be on the helicopter. Originally Vaughan's older brother, Jimmy, was assigned the ill-fated seat on the chopper, but was asked by Stevie to give the seat to him.

Reaction to Vaughan's death was hard-hitting and emotional worldwide. Clapton said Vaughan and the three members of his entourage were "My companions, my associates, and my friends."

He said, "This is a tragic loss of some very special people. I'll miss them all very much."

Vaughan's hometown of Austin, Texas was in a state of shock over the news of his death. Casey Monahan, director of the Texas Music Office said, "This is the worst accident to happen to Texas music since Buddy Holly and the Big Bopper went down in the 50's." Ernie Gammage, the head of the Austin Music Industry Council, said Vaughan died at the height of his career. He said Vaughan was "Destined to be one of the treasured guitar masters."

The early stages of Vaughan's career were a battle against adversity. He gained critical success early, but many believed Vaughan was held back by a problem with drugs and alcohol. In 1986, Vaughan thought his troubles were over. In an interview from May, 1987, Vaughan admitted to having "hit bottom" and realized he "could not go on any longer that way". Vaughan's already-impressive style improved after rehabilitation. He claimed to be growing musically,



Stevie Ray Vaughan

emotionally and spiritually. Vaughan summed up the interview by adding, "If we just keep our noses in the right direction and our hearts in the right place, I think we'll be okay."

During his career, Stevie Ray Vaughan created a larger-than-life reputation with his distinguished blues guitar. Vaughan won two Grammys, one for his 1989 album, "In

Step". An album recorded with his brother Jimmy, entitled "Family Style", is due out this fall. Stevie Ray Vaughan, dead at age 35.

In other news, "The Boss", Bruce Springsteen, is coming to the aid of a Motown legend. Bruce has donated ten thousand dollars to help Mary Wells, who's famous for the song "My Guy". Wells is broke and stricken with throat cancer. Springsteen donated the money to the Rhythm and Blues Foundation in Washington, D.C., which helps legendary blues musicians who are down on their luck. The Foundation will use the money to pay Wells rent and hospital bills.

Look for new music and a tour from Texan rockers ZZ Top. Their new album, "Recycler" is due in record stores on October 16. Four days later, the bearded ones will play their first concert in four years on October 20 at the Cotton Bowl in Dallas to benefit the Texas Special Olympics.

Take that! The new album from Warrant, "Cherry Pie", will include a one minute montage of four-letter outtakes from the group's 1989 tour entitled "Ode to Tipper Gore". The four-letter salute to the P.M.R.C. will probably be the selling point for the album, judging from the poor quality of the first single, "Cherry Pie".

Sinead O'Connor has found controversy once again. Radio stations in New York and New Jersey have pulled O'Connor's songs off the air since she banned "The Star Spangled Banner" from being played before a concert she gave in New Jersey. One station in Newark, NJ, said listeners wanted her banned by a margin of thirty to one.

O'Connor's latest controversy irritated a legend. Frank Sinatra told an audience at the Garden State Arts Center, where O'Connor played the night before, that he thought she should leave the country. As Sinatra put it, "For her sake, we'd better never meet".

And, finally, this week's concert update... Billy Idol will be rocking Atlanta with opening act Faith No More on October 6 and Heart and the Black Crowes will play Atlanta next Saturday night, September 7th.

# Cheap Trick returns with new release, 'Busted'

By **CRAIG MORRISON**  
Columnist

\* Review

Cheap Trick has never been known as the most consistent band in the world. In the late 70's, they put together

a string of hits that have become staples on Classic Rock radio stations around the country, then virtually disappeared until their 1988 album "Lap of Luxury". That album spawned a slew of hits that included the number one ballad "The Flame", and the top ten remake of the popular Elvis tune "Don't Be Cruel". With Cheap

Trick's new release "Busted", it looks like the rockers have broken their jinx and put together back-to-back hits.

Take note that the adjective used to describe "Busted" was the word "hit", not "Classic Cheap Trick" or "the greatest album of all-time". The group is definitely using the same successful formula they used for their last album. Some of the songs do sound like they came from "Lap of Luxury", like "If You Need Me" and the first single "Can't Stop Falling In Love".

To Cheap Trick's credit, while they were copying some of their old songs, they threw in a few creative songs in the classic Cheap Trick vein. The opening cut on the album "Back N' Blue" has the typical sarcastic play on words that is so characteristic of Cheap Trick's attitude. Don't miss the title track if you enjoyed songs like "Surrender" or "She's Tight". It's an energetic and forceful song, with a chorus so haunting, you'll be singing it for days.

"You Drive, I'll Steer" is where Cheap Trick cranks in with their raucous style. Vocalist Robin Zander chimes throughout the chorus of the song, "I'm living in the 'lap of

luxury", and you believe him.

One good point of "Busted" is that Cheap Trick found a solution to the recent bombardment of rock ballads like Kiss' "Forever".

If you want nothing but classic Cheap Trick, go buy their "Live at Budokan" or "Dream Police" albums, but if you want an album chock-full of Cheap Trick's fun and

games, go buy "Busted". Zander, Rick Nielson, Tom Peterson, and Bun E. Carlos have put together an album that sounds familiar, but is worth spending your hard-earned cash for. It is a classy album, featuring the unique vocals of Zander and the energy back-ups of his fellow bandmates that make Cheap Trick stand out in the crowd. Check it out.

## Top 10 reasons to find a new roommate

By **MARVIN ZACHARY STRAUGHTER**  
Features Writer

10. Your roommate does not like Erkel on "Family Matters".
9. Your roommate has not heard M.C. Hammer's "You Can't Touch This".
8. Because your roommate schedules his/her classes around the 'Teenage Mutant Ninja Turtles' cartoon.
7. Your roommate's best friend is the R.A.
6. Your roommate's long-time girlfriend/boyfriend is the

scumqueen/scumking you seduced with the promise of some hot wings from KFC (Kentucky Fried Chicken).

5. If your roommate by the third week of classes hasn't been near, let alone in, the Houston Cole Library.
4. Your roommate thinks that Spike Lee is a hairstyle from the 80's.
3. If your roommate actually believes JSU sports does not dominate the GSC.
2. Your roommate clips his toenails during prime-time television.
1. If your roommate bought the pair of L.A Gear's promoted by Michael Jackson.

## Low, Low Priced Used & New Textbooks

- JSU Clothes • Greek Items • Copies Made
- Film & Film Processing
- Candy • Snacks • Cokes
- Balloons • Gifts • Magazines

# JSU CAMPUS BOOKSTORE

Located In The Montgomery Building

**(205) 782-5283**

## DEFINITION:

**PHI-MU (fi - mue) n. 1. Created for the elite. 2. This is the most luxurious sorority you can be in. 3. Its pleasures are many and accessible only to a select few. 4. Perhaps you too can be one of us.**

## NEW PHIS:

Susan Barr  
Stephanie Barr  
Tiffany Moyer  
Ashley Borden  
Aundrea Mitchell  
Angela Oay  
Dana McNees  
Dana Pruitt  
Dana Bruce  
Dondra Turner  
Melanie Martin  
Amy Sims  
Amy McKinney

Anne Marie Graphos  
Sally Hasse  
Marcia Agee  
Shelley Arnold  
Missy Underwood  
Kathryn Benson  
Kelly Black  
Wendy Rush  
Lisa Moore  
Kristi Lampkin  
Holly Fields  
LeAnn Hurley  
Rhonda Pajor

# PHI MU FALL RUSH

"We Love Our New Phis"



# Students beware of "The Freshman Fifteen"

BY KATRINA MITCHELL  
Special to The Chanticleer

Welcome Freshmen! Along with parties, new friends and being away for the first time, you have something else to look forward to. I am referring to those extra pounds that tend to creep up when you least expect them (at college), and are known unaffectionately as "the freshman fifteen".

Hitting the Waffle House at 4 a.m. is not a good idea, and is one way to

definitely gain weight, and although you should avoid any late night eating, this is a definite no-no. Since

you don't have a mother to cook hot nutritious meals for you anymore, it is very hard not to stock up on junk food. Use willpower in deciding what to buy and stick to fruits and granola bars instead of chips and candy bars. It may seem hard and near-impossible now, but, with a little practice you can avoid gaining any weight upon entering college.

Although any kind of past routine is probably in chaos now, it's important to keep up a good exercise routine. Try to take at least one hour out of each day to walk a couple of miles or just enjoy a game of volleyball or any other activity you like. Don't stay locked up in your dorm room, though, because boredom leads to snacking (and snacking leads

to...well, you know).

It is good to know what your average weight is and if you gain 5 pounds or so, diet for a couple of days immediately and try to take it off before the problem worsens. It is much easier to keep it off in the beginning than to fight it forever. If you don't know your average weight, then consult a standard height/weight chart (available at most clinics and doctor's offices). These can give you an idea of how much you should weigh according to how tall you are.

If through all of your efforts you still find that you "chunk up", then one way to take off the extra weight could be through any of the several fitness classes available. You may find this easier to do than to be left to

your own devices, since you have to go for a grade. This is a good alternative to going to the track or making time for the gym for those of you with little discipline or free time.

Keeping your weight down may seem difficult and not worth the effort, but many studies through the years have proven that obesity leads to several health hazards, and "the freshman fifteen" is where it usually

starts.

Don't be down on yourself and depressed if you have trouble with your weight, however, because there is not "ideal" weight for any one person. It is up to you to decide whether or not to lose a few pounds, and to do it for anyone else totally defeats the purpose.

Watch what you eat and keep exercising and you can probably avoid "the freshman fifteen".

**The Sisters of  
Alpha Xi Delta  
would like to welcome  
"Xi" Best Pledge  
Class of 1990.**



- Patty Adcock
- Wendy Awtery
- Marilyn Bierley
- Pam Boswell
- Danielle Cheek
- Cherie Childers
- Vicki Chirpe
- Amy Cotton
- Kristin Doolin
- Melissa Downing
- Jennifer Gaydon
- Candy Hodge
- Heather Holmes
- Crystal Jackson
- Heather Jones
- Tina Jones
- Kory Kennerly
- April Killingsworth
- Pam King
- Mandi Miller
- Terri Morrison
- Kelli Roberts
- Ashley Russell
- Pam Tidmore
- Shalet Wingo
- Blair Worthington



**We Love You!**

**A  
KAPPA  
SIGMA**



**THE MOST  
WANTED  
MAN IN THE  
COUNTRY**

**JACKSONVILLE STATE UNIVERSITY**

# Mad Alice is talented and different group

*This is the first in a series on local bands. If you know of a band that should be spotlighted, contact Tonya Morrison at The Chanticleer.*

Several bands have played at Brothers, a local nightspot for regional and national talent, but you would be hard-pressed to find a band more frank about what they're after than Mad Alice.

Formally The Bogarts, Mad Alice is a concoction of talented, but very

different musicians. On the one hand, there is Kirk Spratlin, the lead singer, who is known for his wild stage presence and versatile voice. He is definitely a charismatic talent who does not want anyone to misinterpret what Mad Alice is all about. Kirk, who writes most of the group's lyrics,

is very open about what he wants to accomplish with the music of Mad Alice---changing the world. A noble enough idea.

Robby Berry, the bass player, is possibly best known as the "protector" in the band, putting a stop to any violence directed at his fellow bandmates. He is a congenial and likeable person, however, and doesn't seem violent in the least (of course I've never thrown a beer bottle at him). He laughs easily and admits

that he plays for the fun of it, not for the idea of fortune or fame. He, along with Jay Jones (guitarist) formed the band, then called The Bogarts, now known as Mad Alice.

The drummer for Mad Alice, Curtis Byrd, is rumored to be the best drummer in the area and has just returned from a summer away. The other members in the band are more than happy to have him back after a brief stint with a fill-in.

The first of the two guitarists in the

band is Chad Rutherford. He doesn't speak up until the topic rolls around to what he wants to talk about and has something brief and to the point to say about his chosen topics. He is fashionably late to everything and enjoys what he's doing simply because he likes it. No one would accuse him of being too wordy, he said the least of them all. He is as easy-going as the rest of the band and as nice as the

**See Mad Alice, p. 21**

*We,  
the  
members  
of  
The  
Chanticleer  
Staff  
welcome  
your  
comments  
and  
contributions!*

Looking for a fraternity, sorority or student organization that would like to make \$500 - \$1,000 for a one week on-campus marketing project. Call Kevin (800) 592-2121 X110.

### HELP WANTED

1. Would you like to work for yourself?
2. Would you like to set your own hours?
3. Are you self-motivated?
4. Are you a bit of an entrepreneur?

If you answered YES to all of the above, you are just the person we're looking for! As an American Passage Campus Representative, you will be responsible for placing advertising on bulletin boards. You will also have the opportunity to work on marketing programs for such clients as American Express, Ford, and Boston University. There are no sales involved. Many of our reps stay with us long after graduation. For more information, call or write us at the following address:

**AMERICAN PASSAGE NETWORK**  
1-800-727-6783  
215 West Harrison • Seattle, WA 98119-4107

## \$1,200 MONTHLY!!!

### While completing your BSN

#### U.S. NAVY NURSE CORPS

## BACCALAUREATE DEGREE COMPLETION PROGRAM

AGE: AT LEAST 18, BUT NOT MORE THAN 33 AT TIME OF ENTERING THE PROGRAM

CITIZENSHIP: UNITED STATES ONLY

MARITAL STATUS: NO RESTRICTIONS

PHYSICAL STATUS: IN ACCORDANCE WITH NAVY STANDARDS

EDUCATION: A: BE ENROLLED IN OR ACCEPTED FOR TRANSFER TO A REGIONALLY ACCREDITED FOUR-YEAR COLLEGE OR UNIVERSITY WITH AT LEAST 60 SEMESTER OR 90 QUARTER HOURS CREDIT.

B: HAVE A CUMULATIVE GRADE POINT AVERAGE (GPA) OF AT LEAST 3.0 ON A 4.0 SCALE.

C: COMPLETE COLLEGE AS FULL-TIME STUDENT AND MAINTAIN A MINIMUM 2.8 CUMULATIVE GPA.

D: COMPLETE REQUIREMENTS WITHIN 24 MONTHS. (MUST HAVE AN APPROVED DEGREE COMPLETION PLAN BEFORE ENLISTING, TO HELP DETERMINE THE PROJECTED GRADUATION DATE.)

GRADUATES: AFTER EARNING A BSN, GRADUATES WILL BE ENROLLED IN THE NEXT OFFICER INDOCTRINATION CLASS AT NEWPORT RHODE ISLAND FOR 5-1/2 WEEKS.

OBLIGATION: SELECTEES MUST VOLUNTEER TO SERVE FOUR YEARS OF ACTIVE DUTY FROM DATE OF COMMISSION. THE TOTAL MILITARY SERVICE OBLIGATION IS EIGHT YEARS.

**CALL: 1-800-392-1548, Mon. - Fri., 9 - 4**

**NAVY YOU AND THE NAVY.  
FULL SPEED AHEAD.**



Members of Mad Alice from left are Robby Berry, Chad Rutherford, Kirk Spratlijn, Jay Jones, and Curtis Byrd

## Mad Alice

others, also.

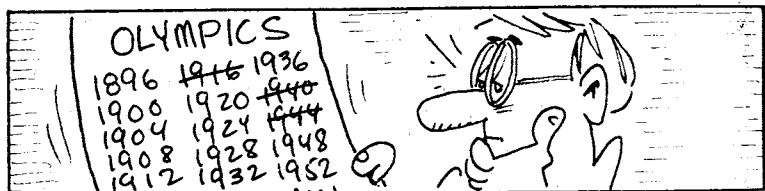
Finally, Jay Jones. He is the other guitar player in the band, and the only one that admitted to having "groupie" (and I use that term very loosely) trouble. Jay says that he thinks he has the most generic name of the group, but after talking to him for any length of time you don't even notice it. He chooses his words carefully, with just about every other sentence quote-worthy, and can find something to do no matter how bored he is (like spinning in a chair). He says that he enjoys being part of Mad Alice because he is addicted to the stage. He says that each song is "like a puzzle" and the final product shouldn't be just pasted together, it should be unique to all the others.

Being very socially conscious, the band had quite a bit to say on the subject of rock music and drug abuse. They all agreed that the music should speak for itself and that drugs are definitely not something that they

care for or want to be linked with, as some musicians are. And they all claim that their only addiction is to music.

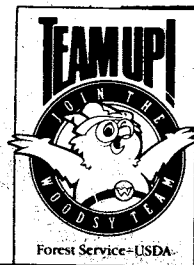
Although the average age in the band is only 21, the group conveys a more mature outlook than most musicians in their 30's, and realize that success is a long, hard road that has many sharp turns. They are willing, however, to do what it takes to make it and make it big, including going on the road (maybe sometime in the near future).

Going to see Mad Alice play is definitely worth the time and money. They usually can be found at various parties and at Brothers, and will be found tonight at the Kappa Sigma house as part of their Back-to-School Bash. On September 28 they'll play at Auburn, and then will return to Jacksonville for a gig at Brothers Bar on the 29th. Check them out.



No Olympic Games were held in 1916, 1940 or 1944 because of World Wars I and II.

# We all have to care about clean air!



Polluted air can hurt animals, like raccoons and rabbits. Team up with your friends and tell everyone we all have to care about clean air!



## WHAT COULD BE BETTER THAN OUR \$1.83 CHECKING? FIRST YEAR NO FEE.

Get Central Bank's \$1.83 Checking Account with no monthly service charges for a full year... if you open your account before September 30, 1990. After that it's still a great deal at only \$1.83 a month.

Central's \$1.83 Checking is so convenient. You can write all the checks you want. You don't have to keep a minimum balance at Central Bank.

You'll have Saturday banking at most locations, and 24-hour access to your account through Central's ServiceLine.

And that's not all. You'll also have the option to get Central's HandyBank2 Card, which puts automatic banking at your fingertips. For an annual fee of only \$16, it lets you use ALERT™ ATM locations all over Alabama, as well as other ATM networks across the U.S. and worldwide. Without ever paying a cent in per-transaction charges. Compare that to the 75¢ or more you may now be paying.

Before this limited offer ends, get \$1.83 Checking with no monthly service charge for your first year.

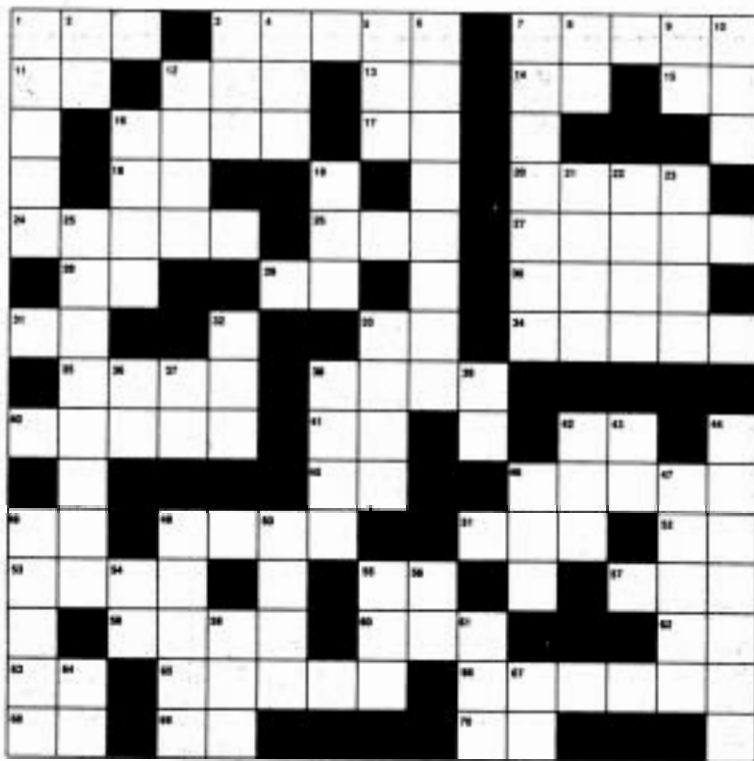
Call or come by any Central Bank location now. And ask for it by number.





**Across**

1. Tom Hanks charmer
3. Sci-fi monster flick
7. "The \_\_\_\_\_ Jungle"
11. "Gorillas \_\_\_\_\_ The Mist"
12. "Tootsie" prop
13. \_\_\_\_\_ Tittle (init.)
14. "\_\_\_\_\_ Takes Two"
15. Scale tone
16. \_\_\_\_\_ War
17. Eastern time (abbrev.)
18. Living room (abbrev.)
20. "Young \_\_\_\_\_"
24. "\_\_\_\_\_ Einstein"
26. Rock group (with "The")
27. "\_\_\_\_\_ From L.A."
28. Santa \_\_\_\_\_
29. "Bat \_\_\_\_\_"
30. Speed contest
31. \_\_\_\_\_ and Pa Kettle
33. Movie state (abbrev.)
34. Walk, Hollywood style
35. "Gidget Goes To \_\_\_\_\_"
38. "In \_\_\_\_\_ Blood"
40. "Dirty \_\_\_\_\_"
41. Biblical word
42. Italian river



45. \_\_\_\_\_ Ed
46. "\_\_\_\_\_ The Greek"
48. "Ghostbusters \_\_\_\_\_" (sequel)
49. "The \_\_\_\_\_ Bunch"
51. "\_\_\_\_\_ Sematary"
52. Date
53. "\_\_\_\_\_ Driver"
55. Public notice
57. "Blood \_\_\_\_\_ Sand"
58. Ancient date
60. Fish eggs
62. Total loss (abbrev.)
63. Movie city
65. "Shadow \_\_\_\_\_ Hawk" (2 words)

66. "Major \_\_\_\_\_"
68. Time period (abbrev.)
69. Watertight (abbrev.)
70. Special effects or movie title

**Down**

1. "\_\_\_\_\_ Budd"
2. "Sunday \_\_\_\_\_ New York"
3. "Animals \_\_\_\_\_ Beautiful People"
4. Household god
5. "\_\_\_\_\_ Of The Needle"
6. "\_\_\_\_\_ Lampoon's Vacation"
7. Film noir, starring

- Marilyn Monroe
8. Near
9. Printer's measure
10. "\_\_\_\_\_ Hard"
12. "\_\_\_\_\_ To Race"
16. "\_\_\_\_\_ Lagoon"
19. World war (abbrev.)
21. \_\_\_\_\_ Bator
22. \_\_\_\_\_ and Nora Charles
23. To close a hawk's eyes
25. "Lawrence \_\_\_\_\_" (2 words)
32. Turhan \_\_\_\_\_
33. "J.W. \_\_\_\_\_"
36. Choice word

37. "\_\_\_\_\_ Smith Goes To Washington"
38. Clumsy person
39. "The Evil That Men \_\_\_\_\_"
42. Container
43. Coffee \_\_\_\_\_ Tea
44. "Blazing \_\_\_\_\_"
46. Meditation
47. African language
48. Fellini country
49. "Black \_\_\_\_\_"
50. "\_\_\_\_\_ Command"
54. Roman numeral
55. "Where \_\_\_\_\_ The Children?"
56. Action word
59. Electronic Funds Transfer (abbrev.)

61. Lively creature
62. Et \_\_\_\_\_, Bruté
64. Acc'ts. receivable
67. Former wife



# Zeta Tau Alpha

would like to congratulate  
*"The Best of the Best"*  
 Our new fall pledges 1990!

- Marilu Barnes
- Kim Bickerstaff
- Debbie Carver
- Paige Dees
- Becky Evon
- Jennifer Ferrell
- Carmen Frazier
- Bevin Gallagher
- Brandi Gibbs
- Kim Grimmett
- Traci Hayes
- Wendy Henderson
- Michele Hensley

- Randa Herring
- Heather Hopkins
- Lisa Hopper
- Suzy Mattox
- Joann Meadows
- Michelle Mize
- Kandi Rousseau
- Hollie Sims
- Denise Stevenson
- Lara Street
- Krista Swiss
- Diane Voight
- Casey Weems

Good Luck this  
 Semester!

Z ♥,

Sisters of ZTA

**We've Got The Answer!**

You are eligible for:

**FREE CHECKING**

**VISA 15.9%**

**LOANS**

*Small signature to 30 year mortgages*

# Birmingham Credit Union

*"Serving Alabama Schools For Over 55 Years"*

\*Member accounts federally insured to \$100,000 by the National Credit Union Administration.

**435-6116**  
 On The Square  
 Jacksonville, AL



**236-1260**  
 1115 Christine Ave.  
 Anniston, AL

# Organizations

## Π Μ

We had a great Rush! Our 26 new pledges are: Marcia Agee, Shelley Arnold, Stephanie Barr, Susan Barr, Kathryn Benson, Kelly Black, Angela Day, Holly Fields, Dana Bruce, Ashley Borden, Amy McKinney, Anne-Marie Graphos, LeAnn Hurley, Sally Haase, Kristen Lampkin, Tiffany Moyer, Rhonda Pajor, Dana Pruet, Lisa Moore, Melanie Martin, Aundrea Mitchell, Dana McNeese, Wendi Rush, Amy Sims, Dondra Turner, and Missy Underwood.

Our Rush chairman Tanzi Webb did a terrific job. Thanks for your hard work and dedication! Kim Brewton, Rush assistant and Tonya Mitchell, recreational chairman also deserve a big hand! Way to go Phi Mus!

We want to wish the Jax state football team the best of luck this season! Also to Stephanie Sparks and Lisa Moore, our Phi Mu cheerleaders - cheer us on to a victory!

## Α Ο Π

We are all excited to be back and are looking forward to our first full

year as a chapter at Jacksonville State University.

Congratulations to our new pledges. Get ready for a fun and exciting semester as new AOTT's!

Sisters-KROP.

Wedding bells are in the air for Becky, Noreen and Tonya. Congratulations and best of luck!

Thanks to Dawn Sawyer and Sherry Greenwood for your hard work and wonderful job during Rush.

Good luck to Kari Barnes, our "pledge mom". We know you will be great!

## Σ Π Ε

Welcome back! We would like to extend an invitation to all new rushces to visit our house during rush. We are located on Old Gadsden Road, just outside of town behind the Coliseum. Stop by and meet the brothers, we look forward to meeting you.

We would also like to welcome all the fraternities and sororities back to school.

Congratulations to brother Scott Lindsey and Amy Perkins on their

recent engagement. Also a big congratulations to brother John Spillman and Tonya Williams of AOPi who are now Mr. and Mrs. Spillman. Good luck to you both. Question of the week: Does Barry Williams pay his dues from social security?

## Κ Σ

First, we'd like to welcome all the new freshmen to Jax State. Kappa Sigma is looking forward to another action-packed Fall. Feel free to drop by our house and visit with the brothers.

Congratulations to our new brothers Scott Place, Brad Whitten, Mike Grubbs, Jerry Woods, and John Hornbuckle. "Spanky" Dotson, were you really just admiring the chandelier? Our annual 'Back to School' bash is today, be sure to drop by and check us out.

## Δ Χ

We would like to welcome all incoming freshmen, transfers and

previous students back to JSU.

Delta Chi has been working hard over the summer and the sork has finally paid off. We have just purchased a new house and have great things planned. Plans are in order for a new deck, a white sand volleyball court, a basketball court, and a horseshoe pit.

Delta Chi will be celebrating it's 100 year anniversary on October 13, which, by chance, is JSU's homecoming game!

We would also like to invite anyone interested in joining a Greek organization to visit Delta Chi during Rush. We are an organization that is both cohesive and diverse. So, come check us out.

We would also like to congratulate our president, Richard P. Scott Jr. in his marriage to Tammy Gilbert on June 2nd at the Alumni House.

Organization News will be accepted Monday-Thursday. All entries must be typewritten. Handwritten entries will not be published.

## Giving To Your Hospital Is Good For What Ails You.

If you want to give to a cause that's guaranteed to make you feel good, give to your local hospital. With medical costs rising and new technology hitting the market every day, your hospital needs your help to stay in front of advances. And when you help them, you very well may be helping someone more important: yourself.

Give To Your Local Hospital. Give To Life.

National Association for Hospital Development



# ~ ~ The Career Fair ~ ~

Meet with representatives from a variety of companies and organizations to explore your career options and employment opportunities.

All JSU Students are invited to attend the Fair on:

**Tuesday, September 18, 1990**

**10:00 a.m. - 3:00 p.m.**

**THERON MONTGOMERY BUILDING AUDITORIUM**

### PARTICIPANTS INCLUDE:

- Alabama Department of Public Health
- BellSouth Corporation
- BellSouth Advertising and Publishing
- Birmingham Police Department
- U.S. Office of Personnel Management
- McGriff, Dowdy and Associates, PC
- Montgomery Police Department
- Haverly Furniture Companies, Inc.
- Goodyear Tire and Rubber Co.
- Federal Bureau of Prisons

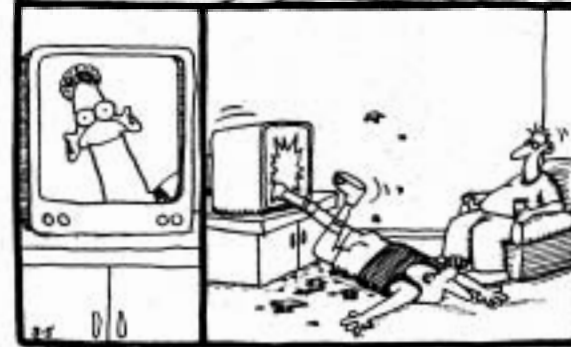
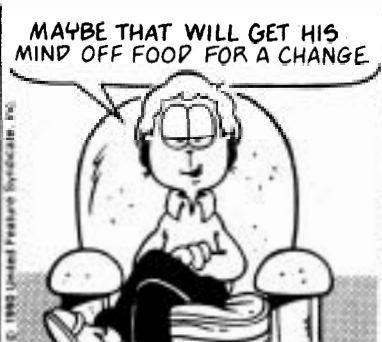
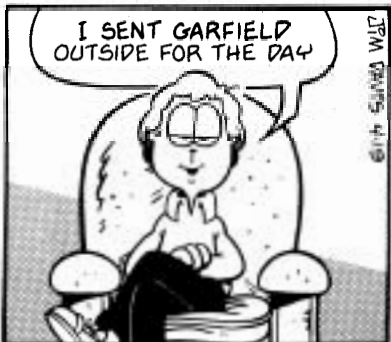
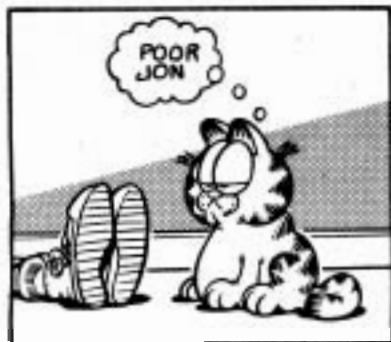
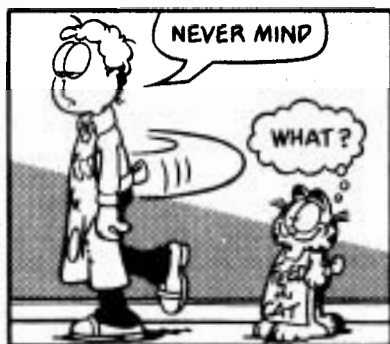
- National Security Agency
- Georgia Pacific
- Gold Kist, Inc.
- U.S. Space Camp
- Fruit of the Loom
- The Heil Co.
- K-Mart Apparel
- Colonial Bank
- Massachusetts Mutual
- Fort McClellan

- Ryder International Corporation
- Radio Shack
- Rockwell International
- Salem Carpet Mills, Inc.
- Sherwin-Williams
- SouthTrust Bank
- Talent Tree
- FBI
- FDIC
- F.N. Wolf & Company, Inc.

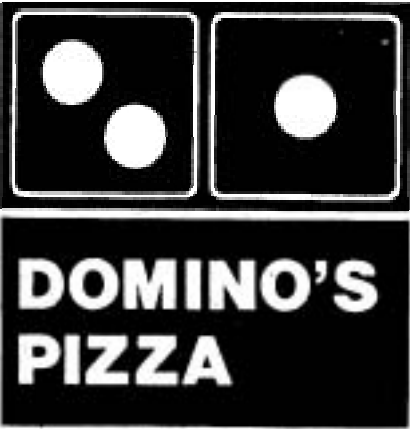
**AND MORE**

Sponsored by: Career Planning and Placement & Career Development and Counseling Services - Jacksonville State University

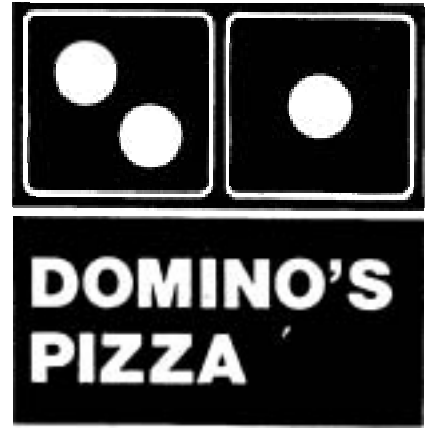
# Cartoons







# DOMINO'S PIZZA



## WELCOME BACK JSU SPECIAL



Buy Two Large One Topping Pizzas  
At Regular Price and Receive  
A Case of Coke

# FREE

**CARRY OUT ONLY**

~ ~ **Starts Monday, September 3** ~ ~

Limited Time Offer.

Available At Jacksonville **Domino's Pizza** Only

No Coupon Necessary



**College Center • 435-8200**

Hours: • Mon. - Thurs. - 11 - 12 • Fri. - 11 - 2 • Sun. - 11 - 11